



Gordon Road, KT5

£399,950

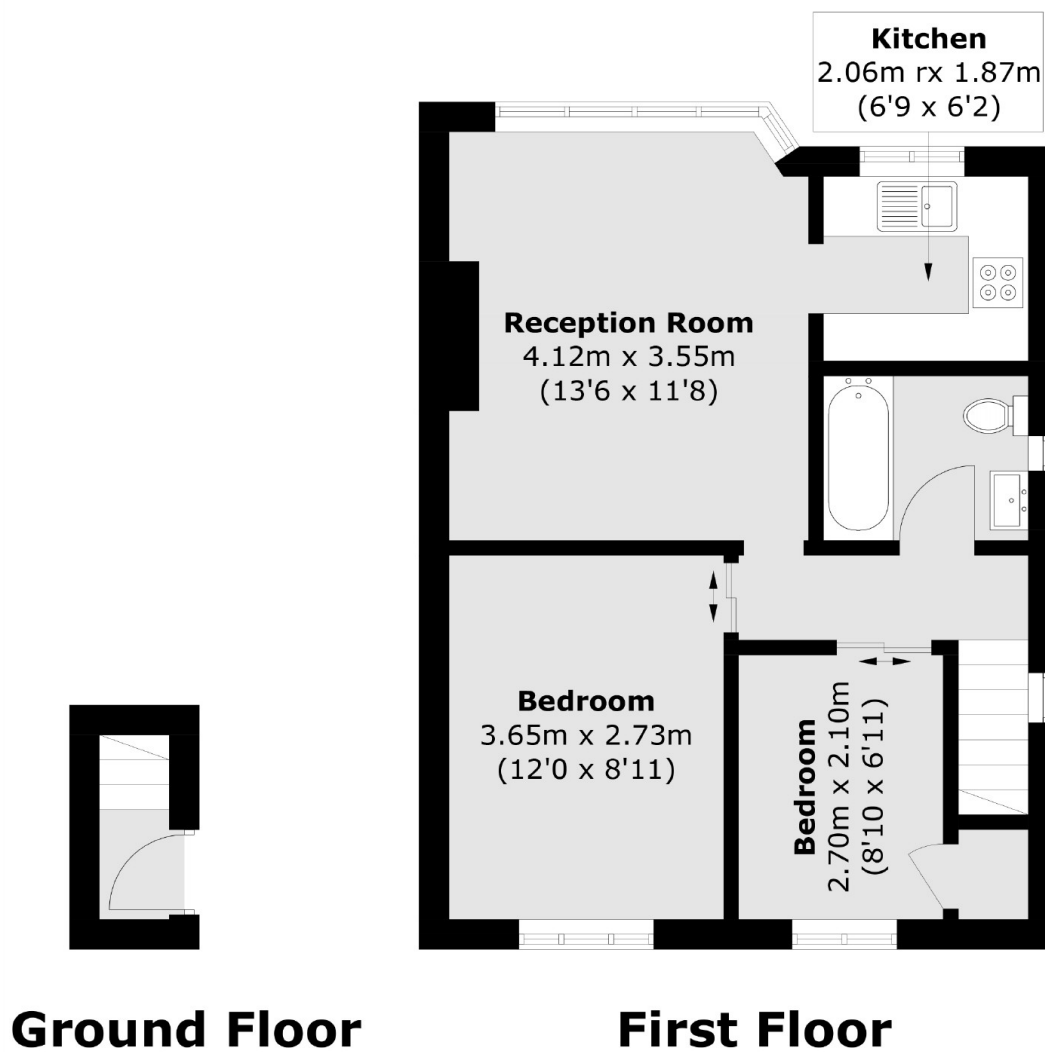
A beautifully presented first floor maisonette with private rear garden. This property has two good size bedrooms, a bright and spacious living/dining room and a smart integrated kitchen. There is also very useful, usable loft space.

Located on a quiet cul-de-sac, within 0.8 miles of Surbiton town centre and mainline station with the fast links to Waterloo, the station can be access via a cut through, taking very little time. There is a frequent local bus service and easy access to the A3.

Features

- First Floor
- Maisonette
- Private Garden
- Beautifully Presented
- Quiet Cul De Sac
- Close to Amenities

Gordon Road, Surbiton, KT5



Total area (approx.): 46.0 sq. m (495.1 sq. ft)