



**Catherine Road, KT6**

**£1,999,950**

**Dexters**



## Catherine Road, KT6

A wonderfully presented newly built four bedroom, four storey town house built in period style. The property offers extensive living space, with large living/dining room, three/four bedrooms, two living rooms and private parking.

The many benefits of this beautiful house include large kitchen family room with separate utility. The room has fully retractable bifold doors opening onto a large terrace with steps up to garden. The Hacker German kitchen will include all Miele appliances, Quooker tap and stone work tops, images can be provided.

There is a large entrance lobby/coats room with fitted cupboards and a separate cloakroom. On the first floor is a stunning room overlooking the garden which has a separate study. There are three/four double bedrooms all with fitted wardrobes.

The specification and finish are to an exceptionally high standard and all in all this is a wonderful opportunity to purchase a brand new period style home.

Catherine Road is Located on one of Surbiton's premier river roads and within walking distance of Surbiton station and the High street.

### Features

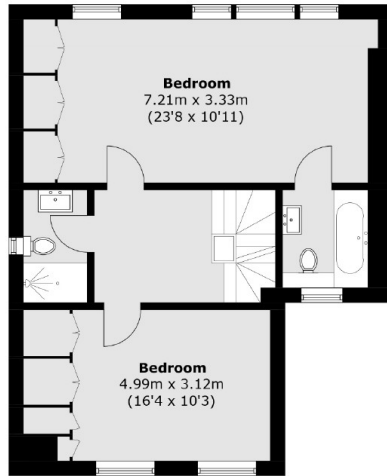
- Built in Period Style
- Gas Fired Underfloor Heating
- 10 Year NHBC Warranty
- Ample Storage Throughout
- Tiled Floors
- Top Specification



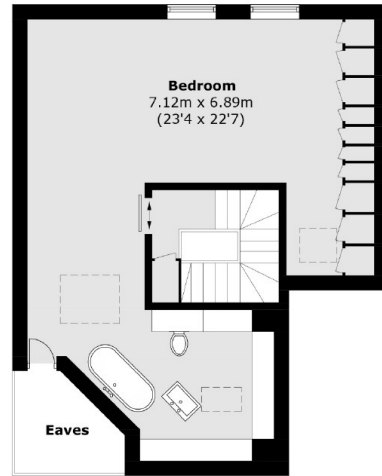




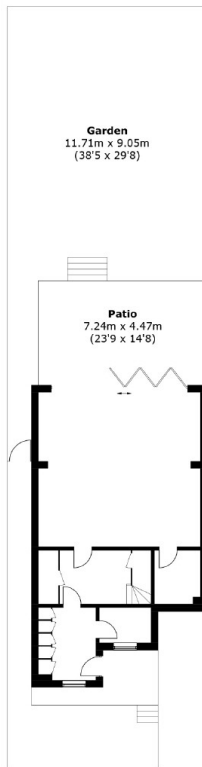
# Catherine Road, Surbiton, KT6



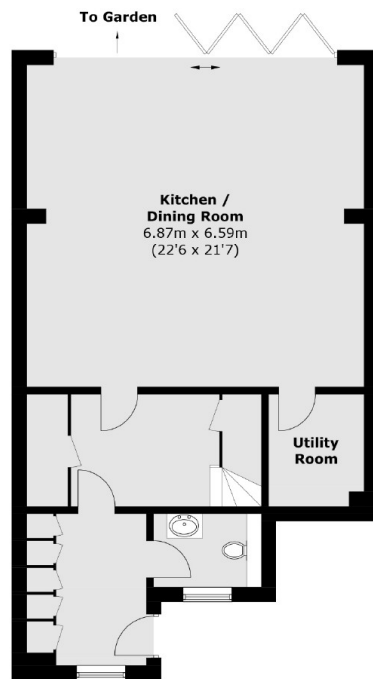
**First Floor**



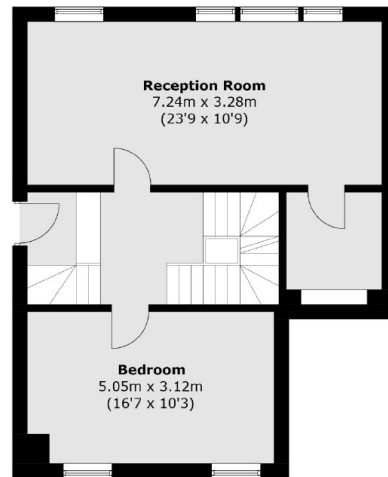
**Second Floor**



**Site Plan**



**Lower Ground Floor**



**Ground Floor**

Total area (approx.): 243.5 sq. m (2,621.0 sq. ft)  
(Excluding Eaves)