



## Brighton Road, KT6

### £649,950

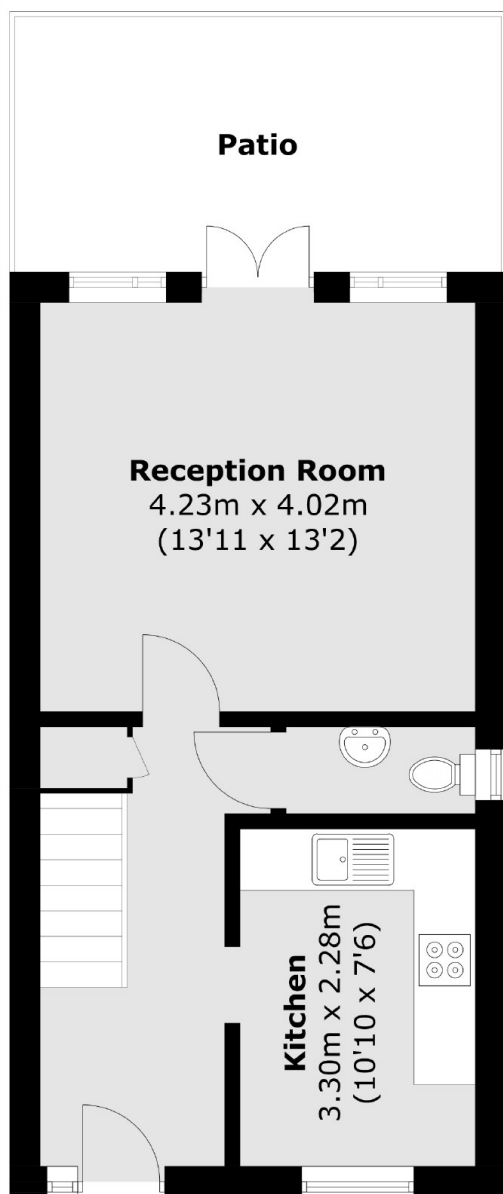
A wonderful, semi detached home, situated in the heart of Surbiton within a modern gated development. This property has a fitted kitchen, a large, bright reception room, two spacious bedrooms, with fitted wardrobes, a bathroom, a cloakroom and a private rear terrace.

With the River Thames, Maple Road, the farmers market and Surbiton high street with mainline train station (fast train to Waterloo in 17 mins) all within half a mile away, this house is peacefully nestled in the heart of town.

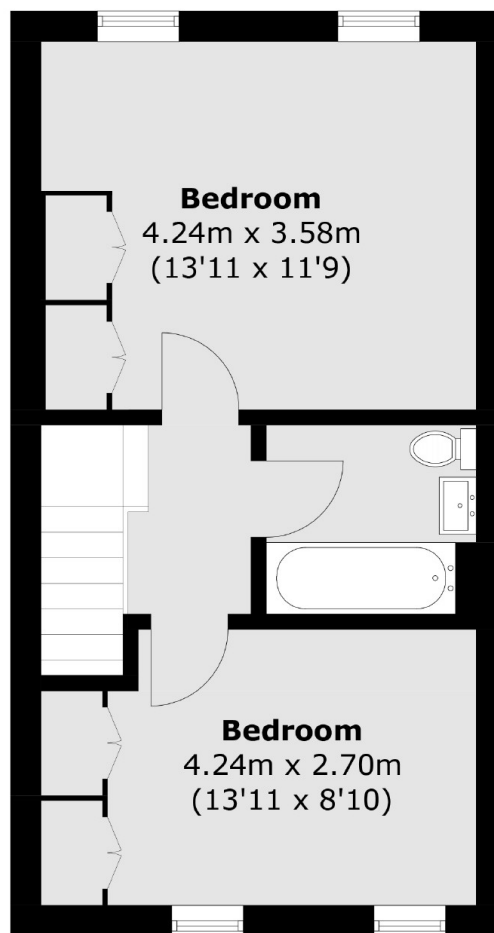
### Features

- Freehold House
- Gated Development
- Two Double Bedrooms
- Off Street Parking
- Private Terrace
- Central Surbiton

# Brighton Road, Surbiton, KT6



**Ground Floor**



**First Floor**

Total area (approx.): 72.1 sq. m (776.1 sq. ft)  
Patio area (approx.): 11.9 sq. m (128.1 sq. ft)