



Portsmouth Avenue, KT7

£875,000

A brand new, immaculately finished, first floor split level apartment. This luxury three bedroom, two bathroom property comes with a private garden and allocated off street parking with electric charging station

Portsmouth Avenue is approximately half a mile away from Thames Ditton train station and just over a mile from Surbiton High Street and the fast train to Waterloo. Thames Ditton Village is nearby as is the River Thames

Features

- New Apartment
- Split level
- Three Bedrooms
- Two Bathrooms
- Private Garden
- Allocated Parking



Portsmouth Avenue, KT7

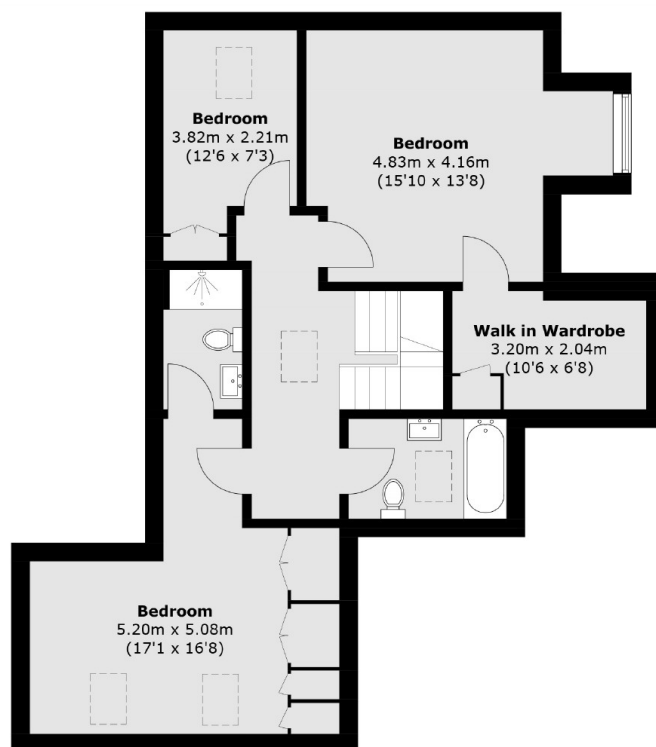
This wonderful apartment is situated on the first floor. At entry level it has a large open plan living/dining/kitchen space with large sash windows and integrated appliances. There is a cloak room and a utility room too.

Upstairs there are three good size bedrooms, one with a walk in wardrobe and one with a fully tiled ensuite. There is a further beautiful bathroom to service the other two bedrooms.

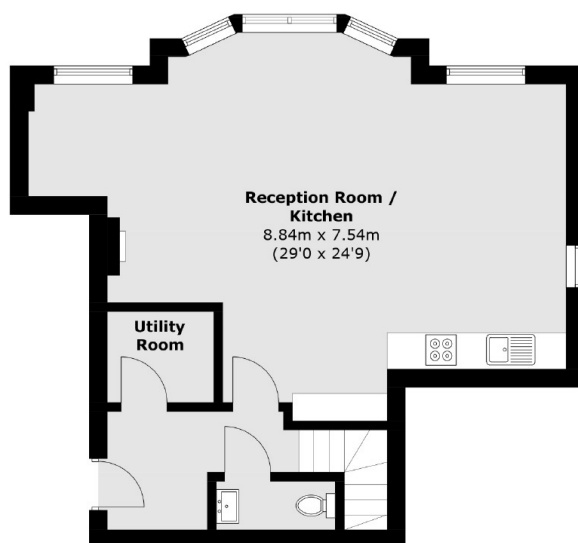
Externally there is an allocated off street parking space with electric charging point and a lovely secluded private garden.



Portsmouth Avenue, Thames Ditton, KT7



Second Floor



First Floor

Total area (approx.): 123.5 sq. m (1329.2 sq. ft)