



Red Lion Road, KT6

£259,950

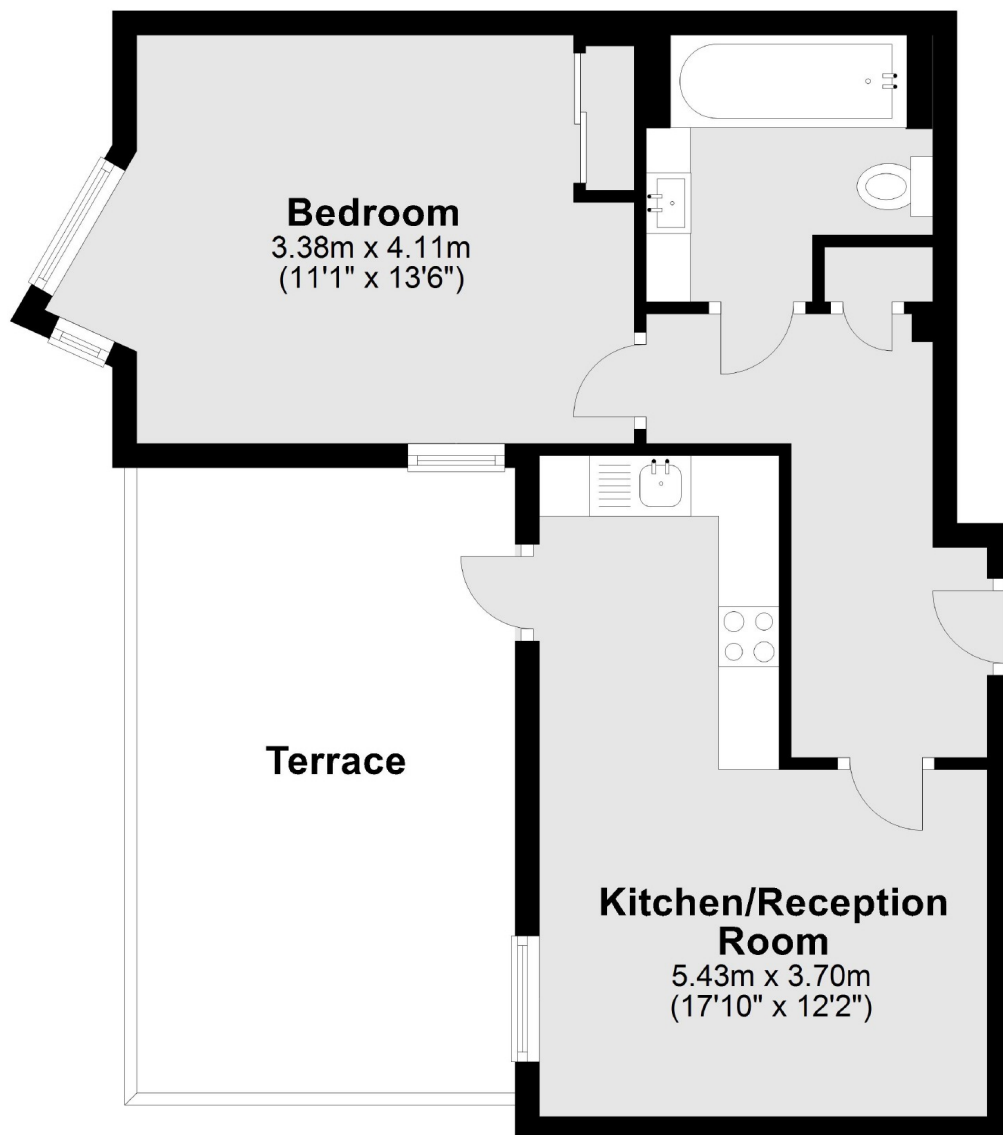
This first floor apartment offers an open plan kitchen/ reception room, one double bedroom, a bathroom, a private roof terrace and securely gated off-street parking. It is quietly positioned to the rear of the building, has underfloor heating throughout, a long lease, and is quietly positioned to rear of building.

Red Lion Road has easy and convenient access to the A3, and is just over half a mile away from Tolworth mainline train station. Surbiton's desirable town centre is just over a mile away.

Features

- First Floor
- Open Plan Living
- One Double Bedroom
- Roof Terrace
- Gated Parking
- Quietly Positioned

Red Lion Road, Surbiton, KT6



Main area: Approx. 43.1 sq. metres (463.8 sq. feet)
Plus terrace, approx. 17.0 sq. metres (183.3 sq. feet)