



Parkside Crescent, KT5

£769,500

Dexters



Parkside Crescent, KT5

With two reception rooms, three double bedrooms, two bathrooms, a private rear garden with a studio, off-street parking and a garage, this family home offers the perfect amount of space. There is no onward chain.

The ground floor offers a bay-fronted reception room, an open plan kitchen/second reception room with bi-folding doors on to the garden, a guest w/c and access to the garage from the hallway.

On the first floor, there are two double bedrooms with fitted wardrobes and a family bathroom. The master bedroom is on the second floor, complete with an en suite bathroom, a Juliet balcony and eaves storage.

Outside, there is a raised patio area with stairs down to the lawn and the garden studio, perfect as an office, a play room or additional storage space. To the front, there is a driveway and access to the garage.

Parkside Crescent has easy access to the A3 and the Hogsmill River with open green space. If you need to get in to London, Berrylands train station is just over half a mile away.

Features

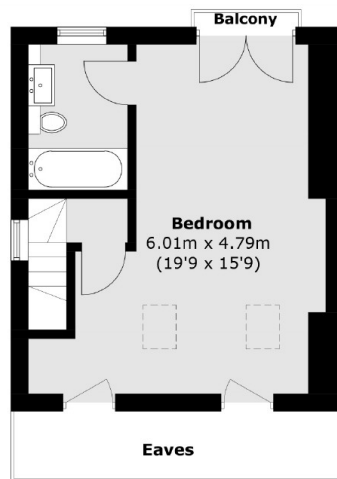
- Two Reception Rooms
- Three Double Bedrooms
- Two Bathrooms
- Garden With Studio
- Off-Street Parking
- Garage



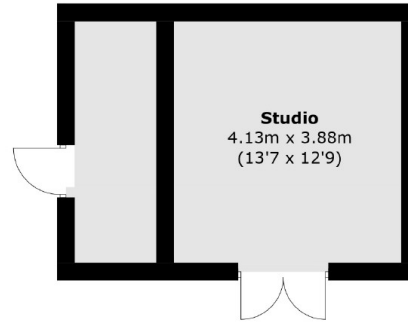




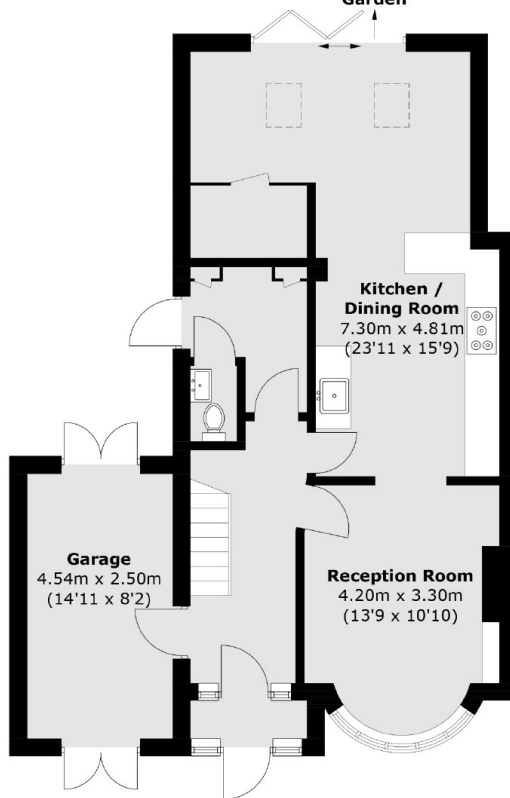
Parkside Crescent, Surbiton, KT5



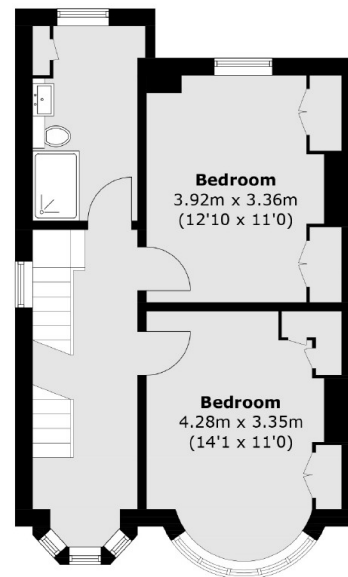
Second Floor



(Not Shown In Actual
Location / Orientation)



Ground Floor



First Floor

Total area (approx.): 146.3 sq. m (1,574.7 sq. ft)

(Excluding Eaves)

Studio: 23.6 sq. m (254.0 sq. ft)

Balcony: 0.4 sq. m (4.3 sq. ft)