



Brighton Road, KT6

£399,950

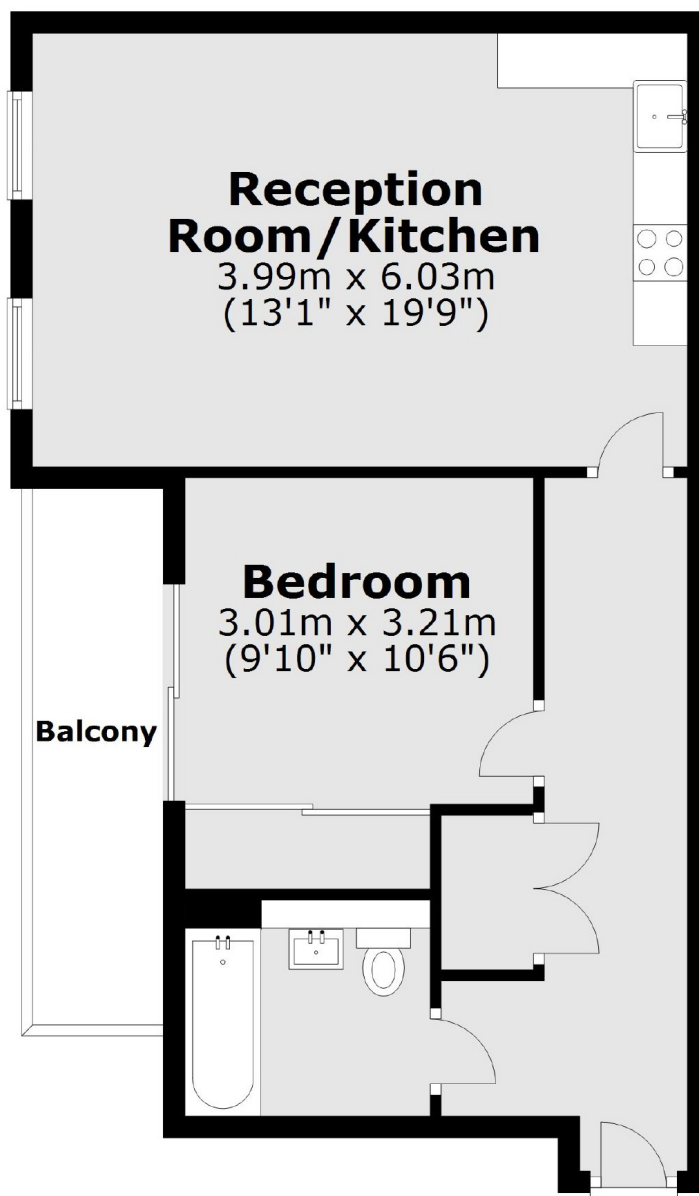
A modern first floor apartment in a central location. Accommodation includes an open plan kitchen/reception room, one double bedroom with a private balcony, and a modern bathroom.

Brighton Road is in the heart of Surbiton, with the buzz of the desirable Maple Road and the popular high street both around the corner. Surbiton's mainline train station is less than half a mile away.

Features

- First Floor
- Modern Interior
- Open Plan Living
- One Double Bedroom
- Private Balcony
- Central Location

Brighton Road, Surbiton, KT6



Total area: approx. 52.2 sq. metres (562.0 sq. feet)