



Ronelean Road, KT6

£485,000

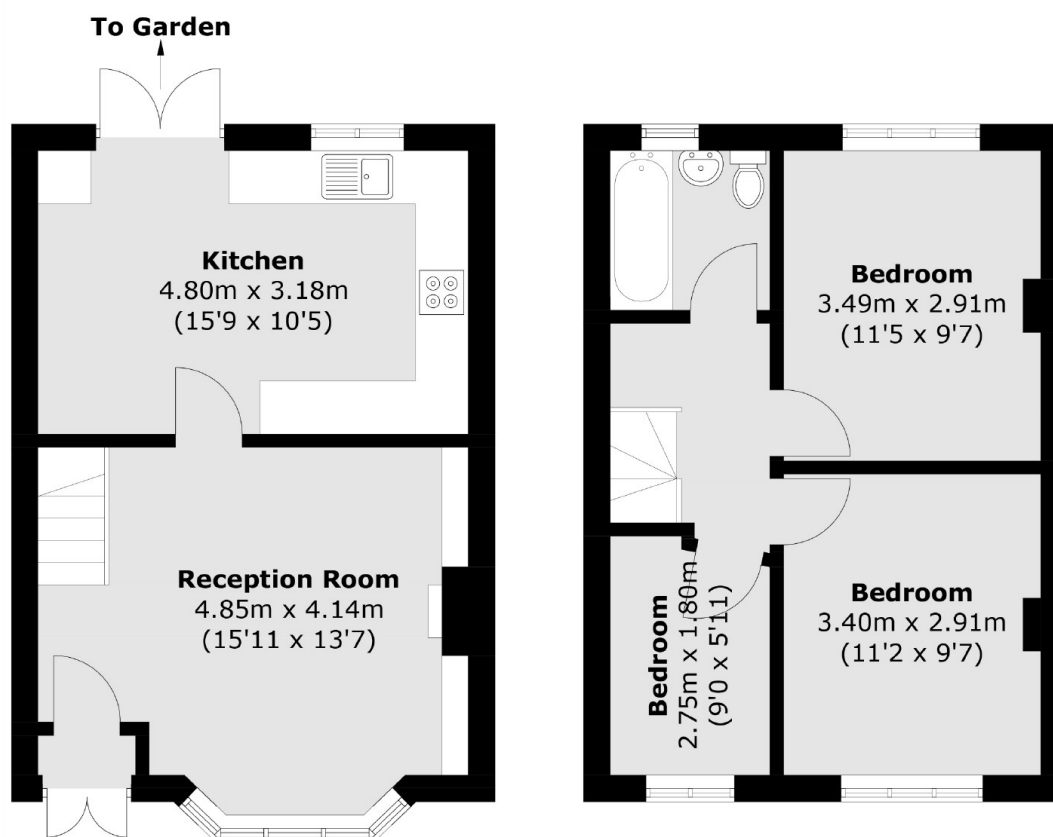
This family home offers a welcoming bay-fronted reception room, a spacious kitchen/diner with French doors on to your own private rear garden, and off-street parking to the front.

Ronelean Road has easy access to the A3, and is approximately a mile away from Tolworth's mainline train station and a vast selection of local shops, bars and restaurants.

Features

- Bay-Fronted Living Area
- Kitchen/Diner
- Three Bedrooms
- Private Garden
- Off-Street Parking
- Great Location

Ronelean Road, Surbiton, KT6



Ground Floor

First Floor

Total area (approx.): 69.7 sq. m (750.2 sq. ft)