



Gladstone Road, KT6

£675,000

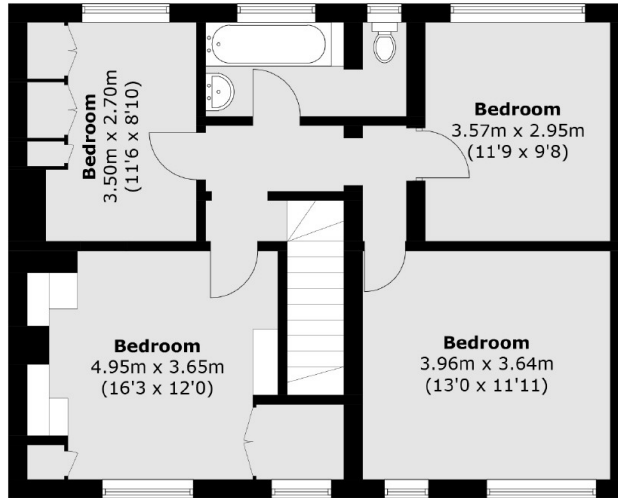
With two reception rooms, four bedrooms, two bathrooms, a large private garden, off-street parking and a garage, this end of terrace family home offers plenty of space for everyone to live comfortably.

Gladstone Road is a peaceful cul-de-sac, with easy access to the A3 and regular bus links in to town. Surbiton high street and the train station are conveniently just over a mile away.

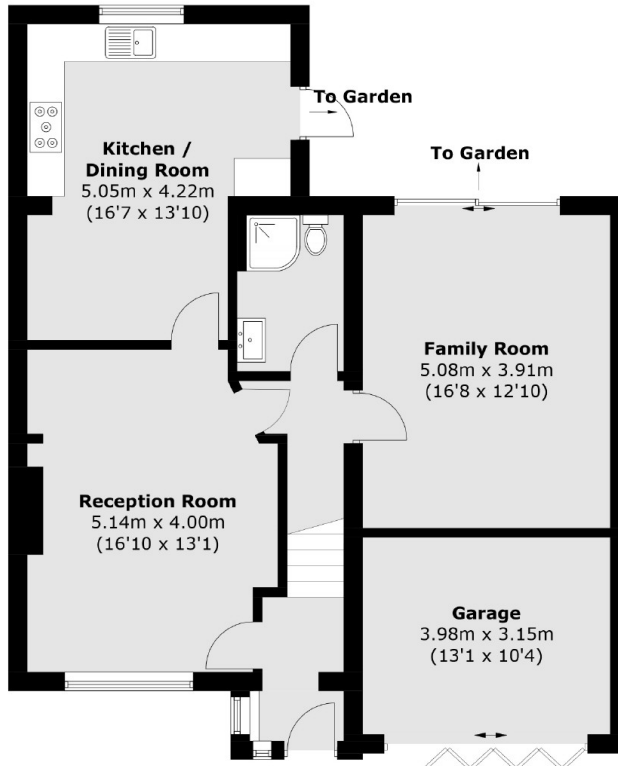
Features

- End Of Terrace
- Two Reception Rooms
- Four Bedrooms
- Two Bathrooms
- Off-Street Parking
- Garage

Gladstone Road, Surbiton, KT6



First Floor



Ground Floor

Total area (approx.): 141.1 sq. m (1,518.8 sq. ft)

Garage (approx.): 12.9 sq. m (138.8 sq. ft)