



The Avenue, KT5

£439,950

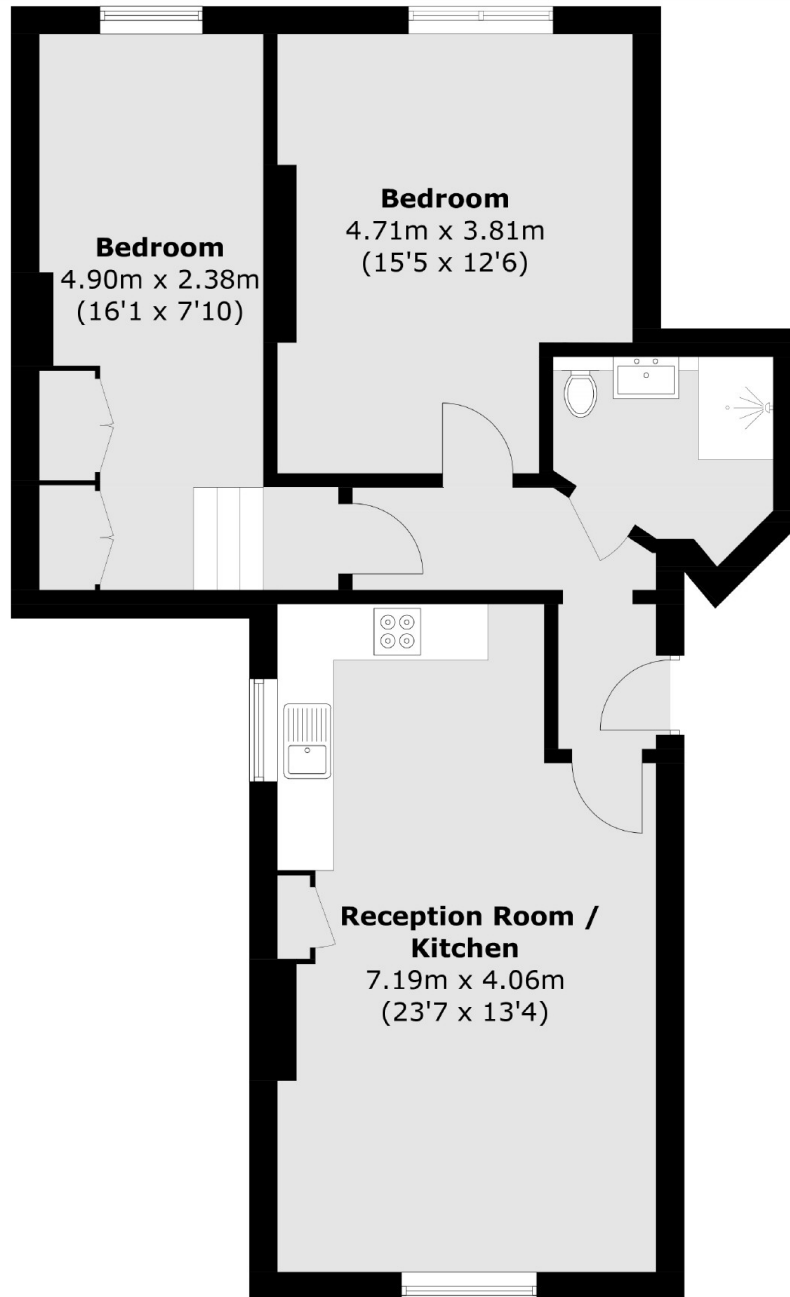
This first floor apartment is in an imposing Victorian building and comes with a share of the freehold. There is a spacious open plan kitchen/reception room, two bedrooms, communal gardens and parking.

The Avenue is a desirable road in Berrylands, less than a mile away from Surbiton's popular high street and both Surbiton and Berrylands mainline train stations, with their quick links to London.

Features

- First Floor
- Open Plan Living
- Two Bedrooms
- Fitted Wardrobes
- Communal Gardens
- Great Location

The Avenue, Surbiton, KT5



Total area (approx.): 70.6 sq. m (759.9 sq. ft)