



Hythe Road, KT6

£429,950

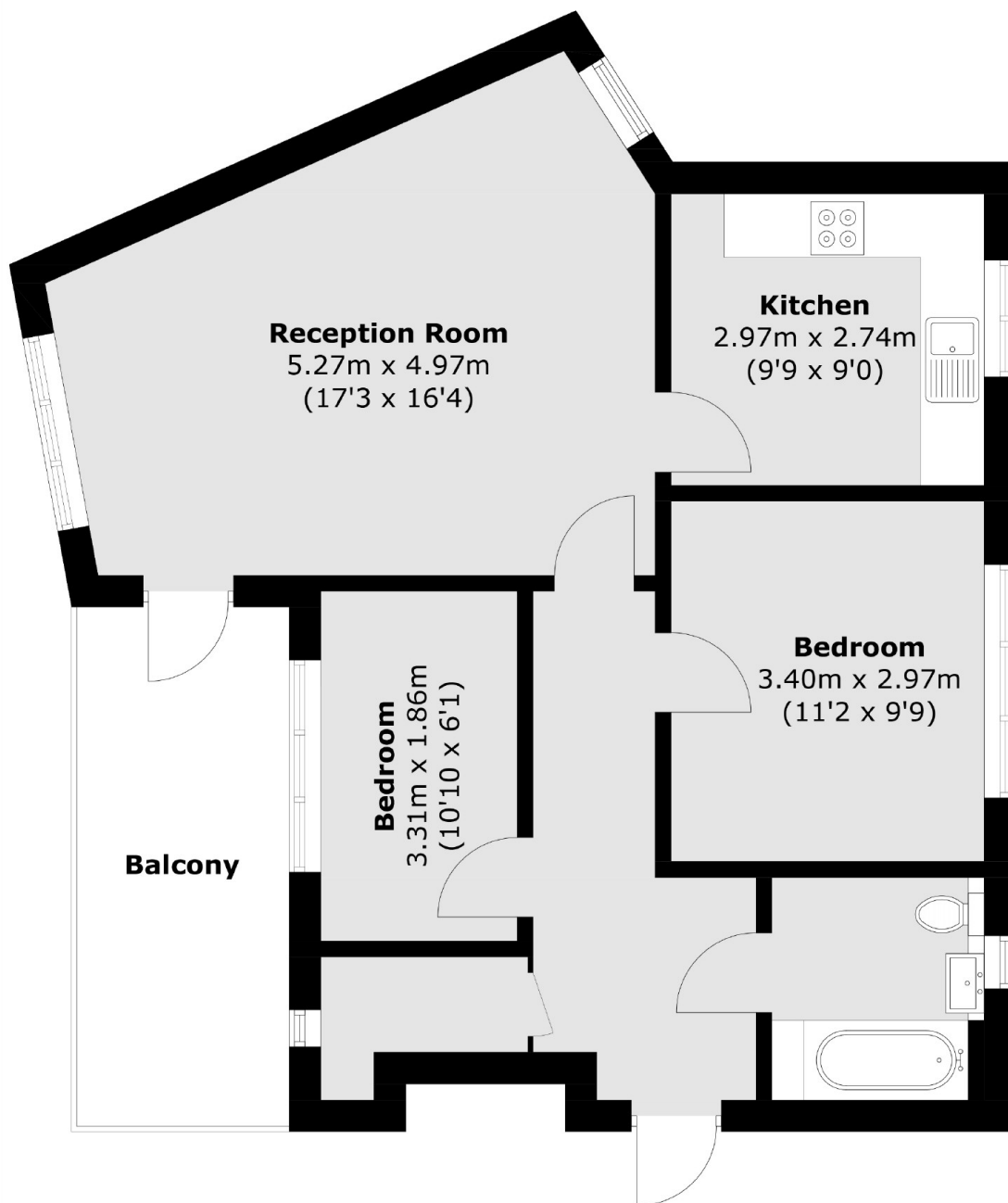
This two bedroom top floor modern apartment is located in a peaceful location in central Surbiton. The property is on the top floor and benefits from a balcony with great views, a lift, no onward chain and allocated parking.

Hythe Road is a quiet and peaceful road located 0.1 miles from Surbiton train station with it's fast links into London. The high street with its bars, restaurants, bus stops and shops is just 0.2 miles away.

Features

- Top Floor
- Central Location
- Large Reception Room
- Two Double Bedrooms
- Private Balcony
- Allocated Parking

Hythe Road, Surbiton, KT6



Total area (approx.): 63.2 sq. m (680.3 sq. ft)
Balcony : 9.8 sq. m (105.5 sq. ft)