



## Surbiton Hill Road, KT6

£359,950

This ground floor apartment makes a fantastic home. It comes with a spacious living room, a separate kitchen, two bedrooms, a private garden and unallocated parking.

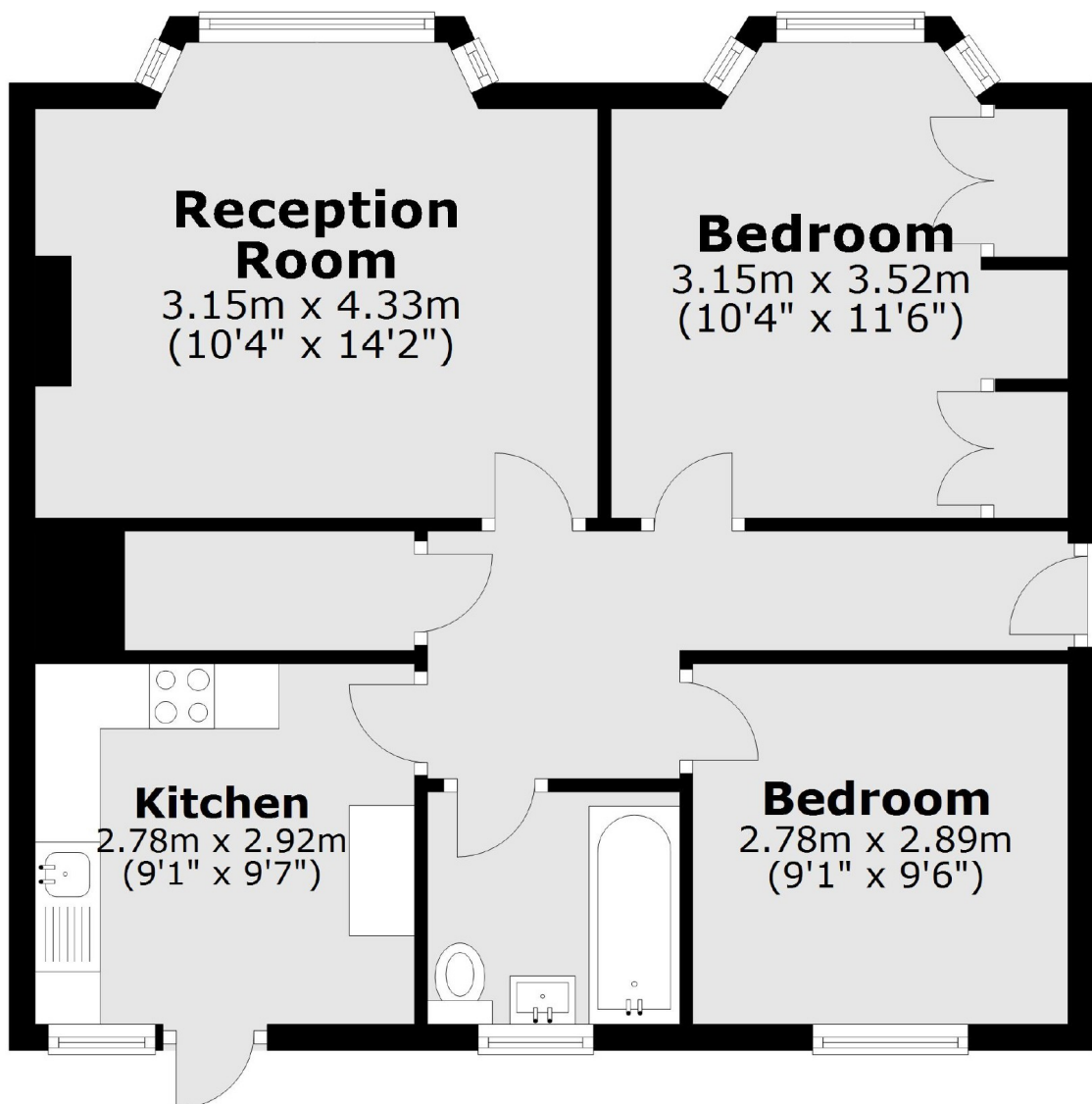
Surbiton Hill Road is approximately half a mile away from Surbiton's popular high street and the mainline train station, with its fast links to London.

### Features

- Ground Floor
- Two Bedrooms
- Private Garden
- Communal Front Garden
- Off-Street Parking
- Great Location

**Surbiton Hill Road,  
Surbiton, KT6**

**Ground Floor**



Total area: approx. 58.0 sq. metres (624.2 sq. feet)