



## The Avenue, KT5

£349,950

This converted Victorian flat has a front reception with bay window, a kitchen/breakfast room, one double bedroom, bathroom and direct access to communal gardens.

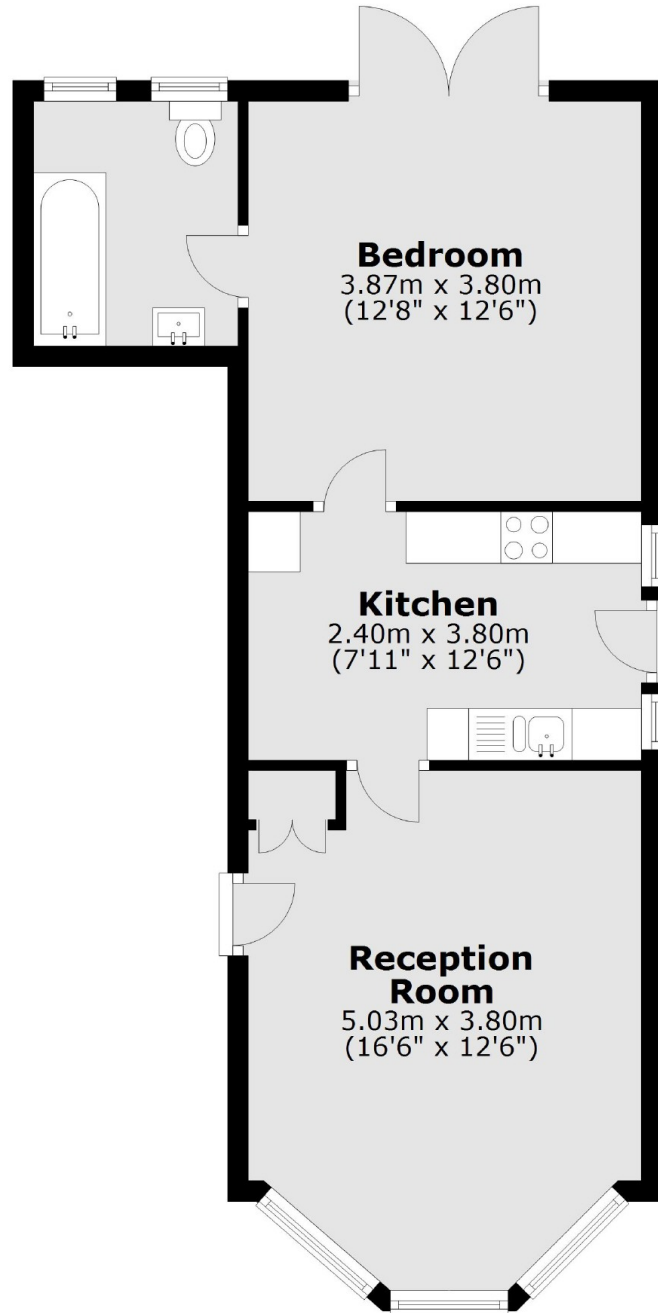
The Avenue is perfect for commuters, being just over half a mile away from Surbiton's mainline train station and the buzzing Surbiton high street.

### Features

- Period Conversion
- Ground Floor
- One Bedroom
- Communal Gardens
- Off-Street Parking
- Great Location

# The Avenue, Surbiton, KT5

## Ground Floor



Total area: approx. 47.1 sq. metres (506.5 sq. feet)