



Cranes Drive, KT5

£1,250,000

Dexters



Cranes Drive, KT5

UNDER OFFER- With period features such as original Edwardian fireplaces and stained glass windows, this home is full of charm. There is also planning permission in place with approval to extend.

The ground floor offers the perfect space for the family to get together or to entertain guests. There is a front reception room, a dining room and a family room with doors on to the garden.

On the first floor, there are three bedrooms and two bathrooms (one is an ensuite to the master bedroom). On the second floor there is a further bedroom and a study, both with access to plenty of eaves storage.

Outside, there is a private rear garden with side access. There is a patio, ideal for al-fresco dining, with steps down to the lawn where the children can play in the summer. To the front, there is a large driveway.

Cranes Drive is just over half a mile away from both Surbiton and Kingston town centres, offering their mainline train stations and a variety of shops, bars and restaurants.

Features

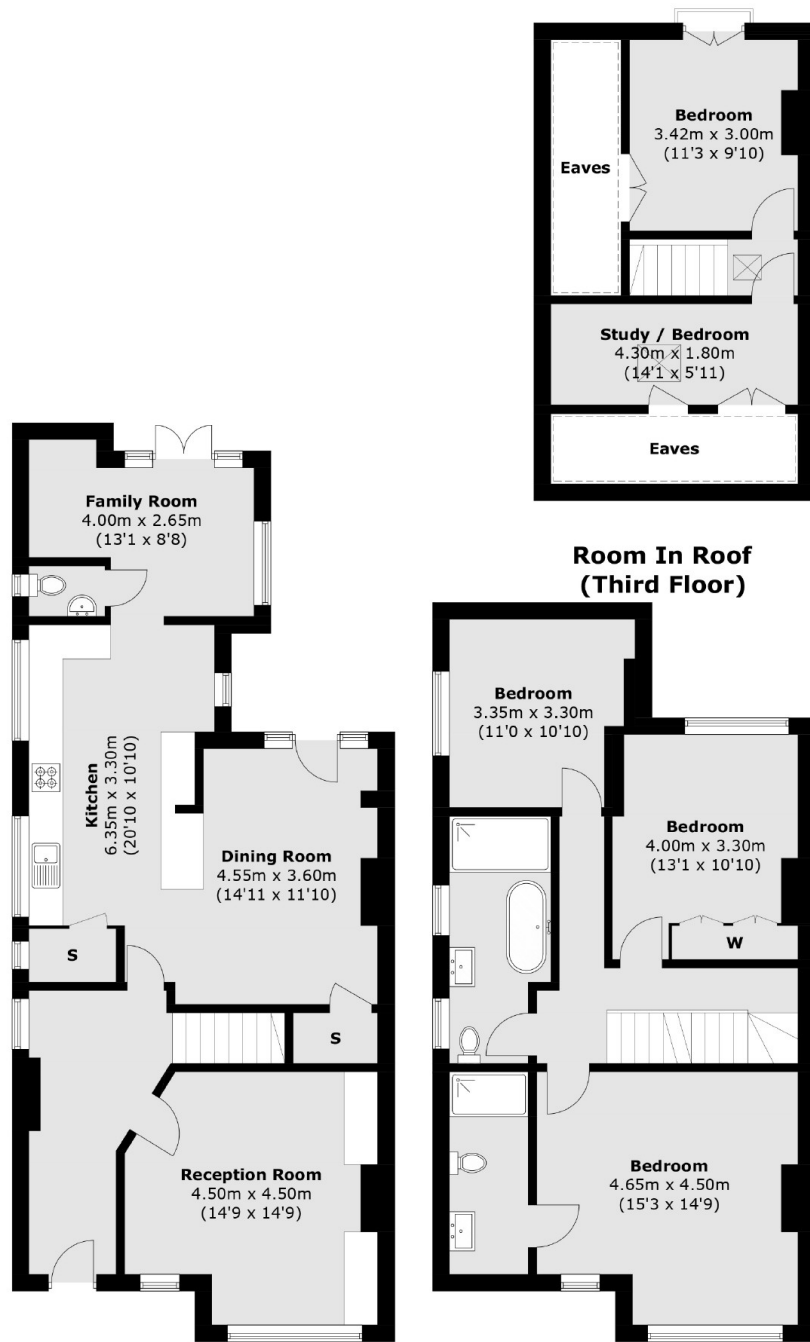
- End Of Terrace
- Three Reception Rooms
- Four Bedrooms + Study
- Two Bathrooms
- Off-Street Parking
- Fantastic Location







Cranes Drive, Surbiton, KT5



Ground Floor

First Floor

Total area (approx.): 171.1 sq. m (1,841.6 sq. ft)
(Excluding Eaves)

Balcony area (approx.): 0.3 sq. m (3.2 sq. ft)