



Beaufort Road, TW1

£1,500,000

If you are looking for something special, look no further. Dexters are thrilled to present to the market for the first time this four bedroom end of terrace town house perfectly positioned within an exclusive gated development, enjoying unspoilt views over Marble Hill Park.

Beaufort Road is a quiet and desirable location bordering both East Twickenham and St. Margarets. If schools are on the agenda you will be pleased to hear that both Orleans primary and secondary schools are very close by.

Features

- End Of Terrace
- Four Bedrooms
- Three Bathrooms
- Well Presented
- Off Street Parking
- Idyllic Location



Beaufort Road, TW1

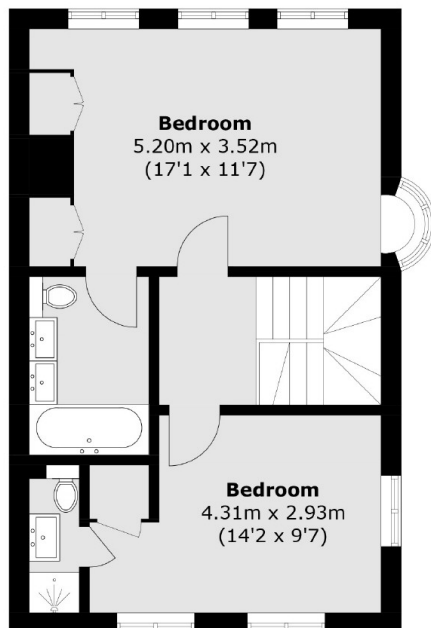
As you enter through the electronic security gates into the private and well kept road, you will immediately feel how private and secluded it is, despite being so centrally located. This house is arguable best positioned within the development as it enjoys dual aspect views over the park.

Accommodation is arranged over three floors. On the ground floor the garage has been converted to benefit form a front storage and utility room with the extra space being extended into the kitchen. The stylish kitchen is beautifully presented with a breakfast bar and space for a dining table.

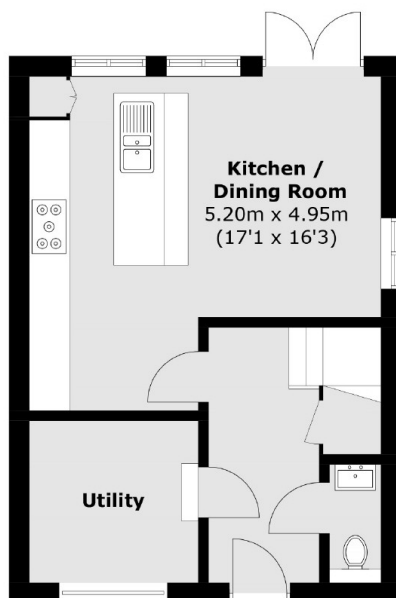
Upstairs are four bedrooms, spacious reception room, family bathroom and two en suites. A real feature are the oriel windows which provide unobstructed views over the park, which is unique to this house. The property is offered in fantastic condition throughout and also benefits from off street parking.



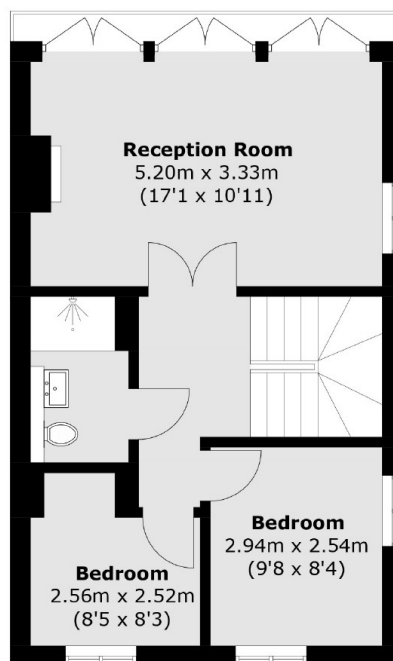
Beaufort Road, East Twickenham, TW1



Second Floor



Ground Floor



First Floor

Total area (approx.): 130.3 sq. m (1,402.5 sq. ft)