



## Railshead Road, TW7

£625,000

Set within this peaceful riverside development, is this wonderful second floor two double bedroom two bathroom apartment. The property enjoys direct river views across the River Thames and is offered to the market in excellent condition with no onward chain.

Waterside apartments is a stunning development of luxurious apartments with spectacular river views on the Old Isleworth/St Margarets border in the London Borough of Richmond.

### Features

- Two Double Bedrooms
- Direct River Views
- Cycle Storage
- Allocated Underground Parking
- Balcony
- Two Bathrooms





## Railshead Road, TW7

This stylish property comes with a contemporary open-plan kitchen/living/dining areas with patio doors leading onto a balcony overlooking the river. The apartment is finished to the highest standard to include double glazing and under floor heating throughout. The kitchen comes with composite stone work surfaces together with full range of branded integrated appliances and the smart bathrooms come with designer sanitary ware.

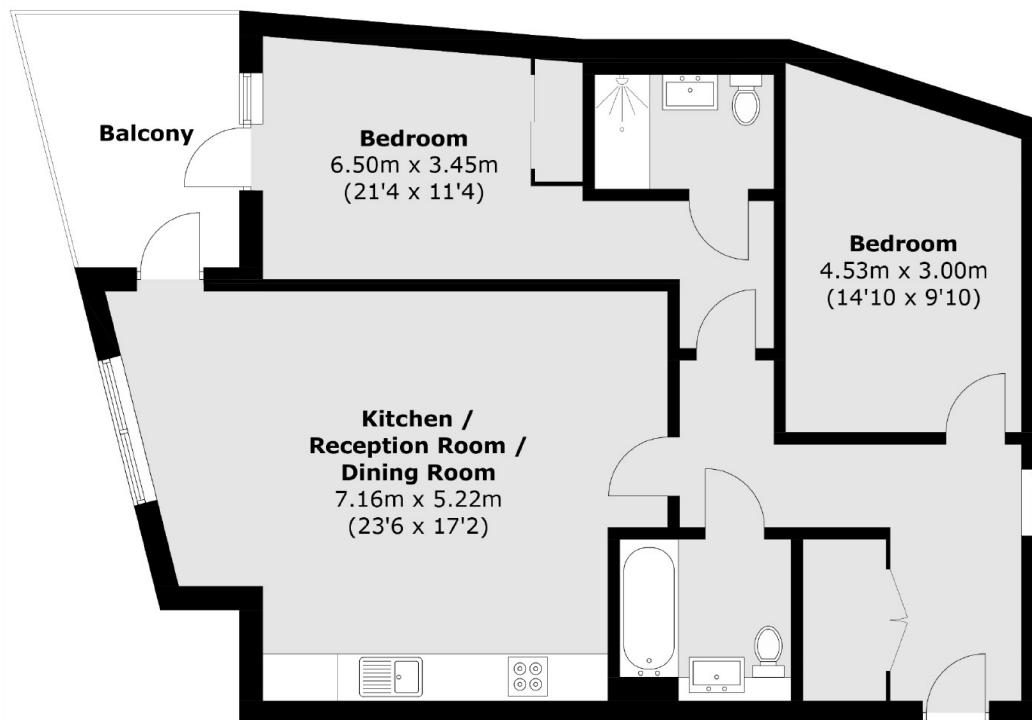
For the more security conscious, entrance doors come with fitted high security locks and audio/visual door entry system for peace of mind and to accommodate visitors. There is also the added benefit of secure basement allocated parking and cycling storage.







# Railshead Road, Old Isleworth, TW7



Total area (approx.): 83.9 sq. m (903.1 sq. ft)  
Balcony (approx.): 7.9 sq. m (85.0 sq. ft)