



Elizabeth Gardens, TW7

£1,995 Per calendar month

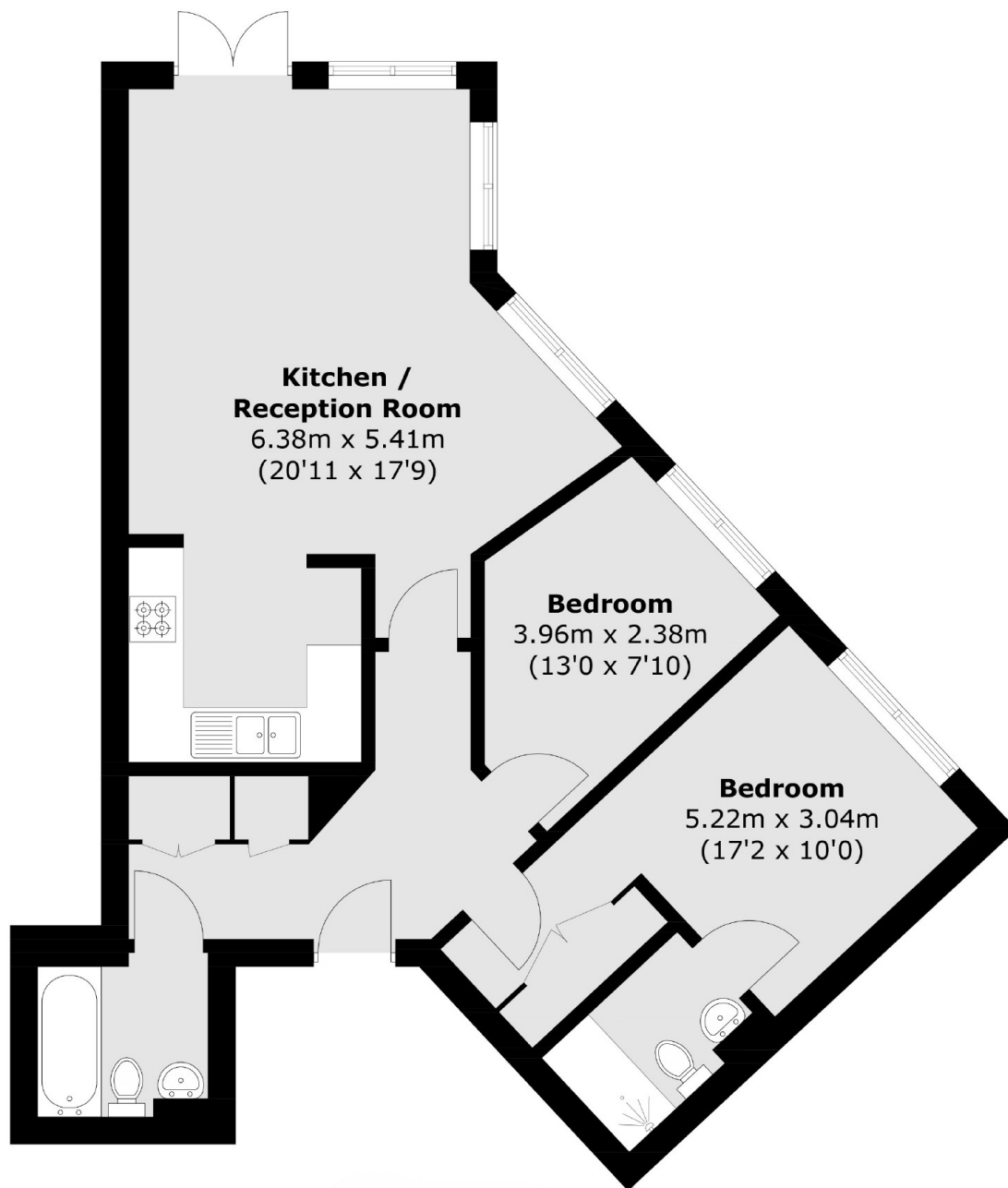
A lovely two bedroom modern apartment in a gated development with allocated parking. Situated on the ground floor with an open-plan reception room, a kitchen and direct access to communal gardens.

Within half a mile of Richmond Lock and St. Margarets Village including its mainline train station and village high street with popular boutique shops, restaurants and cafes.

Features

- Ground Floor
- Two Double Bedrooms
- Open-Plan Living
- Two Bathrooms
- Off-Street Parking
- Communal Gardens

Elizabeth Gardens, Isleworth, TW7



Total area (approx.): 66.7 sq. m (717.9 sq. ft)