



Richmond Road, TW1

£415,000

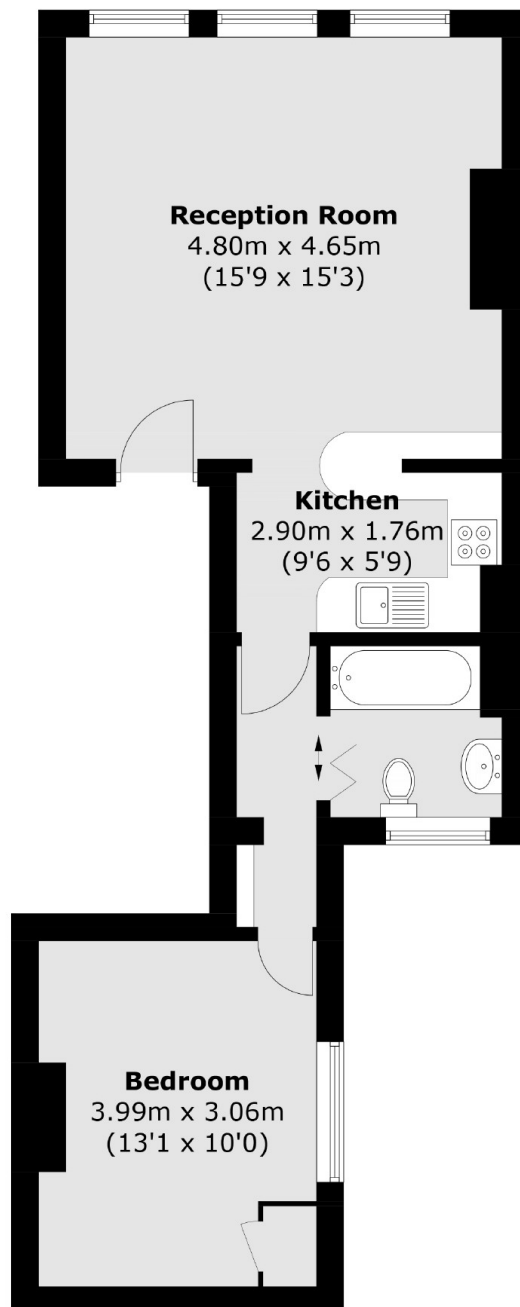
Located in the heart of East Twickenham, this delightful one double bedroom first floor apartment is spacious and full of natural light. With a long lease, large windows, high ceilings and plenty of period charm this property is not to be missed.

Richmond Road is only 0.5 miles from Richmond Town Centre with tow path walks along the River Thames and an array of bars, cafes and shops as well as the mainline and underground station.

Features

- One Double Bedroom
- First Floor
- High Ceilings
- Large Windows
- Period Features
- Fantastic Location

Richmond Road, East Twickenham, TW1



Total area (approx.): 46.8 sq. m (503.7 sq. ft)