



Richmond Road, TW1

£1,750 Per calendar month

A beautifully presented one bedroom apartment set back from the main road is now ready to view. The property further benefits from high ceilings, large double glazed windows and is in a fantastic location within East Twickenham.

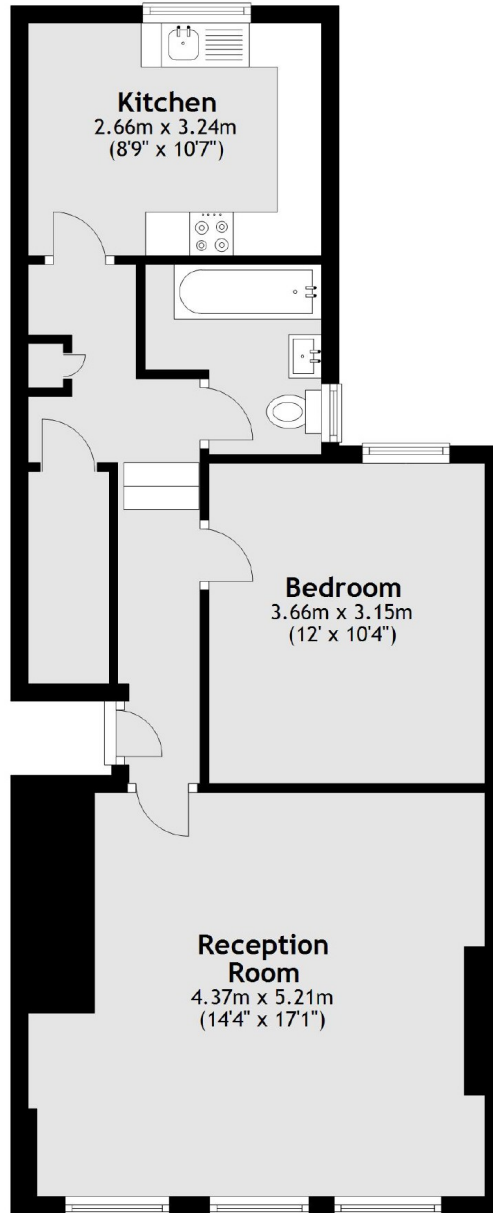
Richmond Road is set in the heart of East Twickenham, just moments away from Richmond Bridge and the River Thames.

Richmond has an excellent choice of riverside bars, restaurants and is close to Marble Hill Park.

Features

- One Double Bedroom
- Period Apartment
- Beautifully Presented
- Separate Kitchen
- Large Living Area
- Fantastic Location

Richmond Road,
East Twickenham, TW1



Total area: approx. 59.0 sq. metres (635.4 sq. feet)