



Ellesmere Road, TW1  
£389,950

**Dexters**



## Ellesmere Road, TW1

Ideally situated on one of East Twickenhams premier roads and within walking distance of Richmond town centre, is this fantastic one double bedroom top floor apartment. The property is bright, spacious and features a dual-aspect reception/dining room with two balconies, a well-presented kitchen and a family bathroom. Further benefits include a share of the freehold and a long lease. With a beautifully kept communal garden and underground parking; this property is not to be missed.

Ellesmere Road is a popular residential road providing good access to St Margarets village with its shops, cafés, restaurants and train station. As well as Marble Hill Park, Moor Mead Park, Richmond town centre and train station with fast links into London Waterloo. The River Thames is just around the corner, why not take a stroll over Richmond Bridge for a spot of shopping.

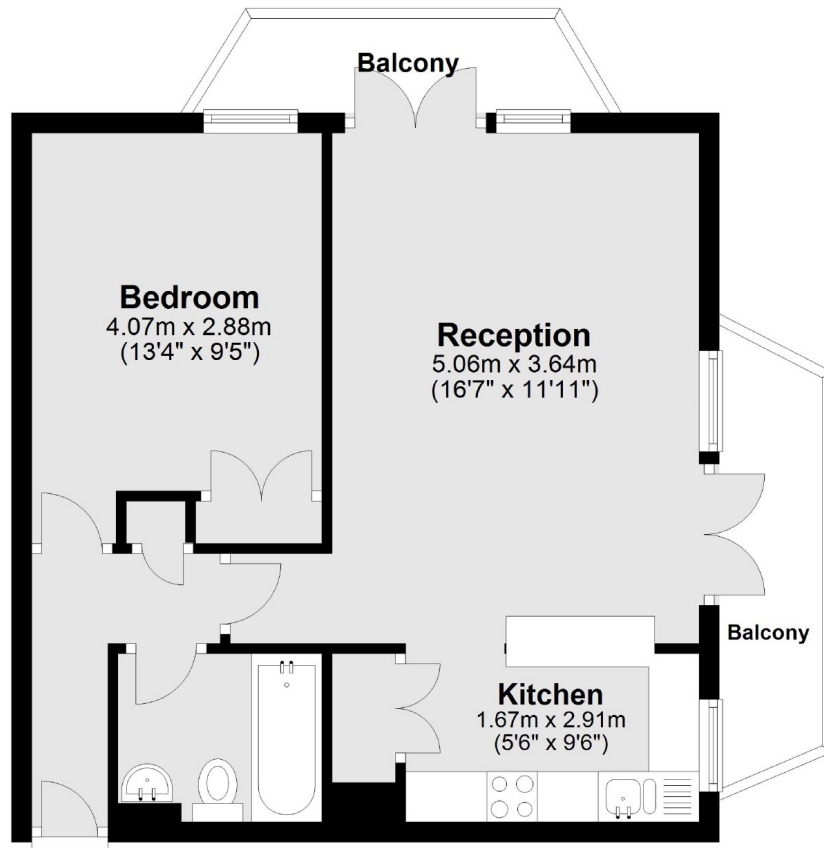
### Features

- Central Location
- One Double Bedroom
- Underground Parking
- Double Aspect Reception
- Two Private Balconies
- Communal Gardens



Ellesmere Road,  
East Twickenham, TW1

### Second Floor



Total area: approx. 45.1 sq. metres (486.0 sq. feet)