



Union Lane, TW7

£350,000

A well presented two double bedroom purpose built apartment offered to the market in great condition. The property further benefits from a private balcony, long lease and no onward chain.

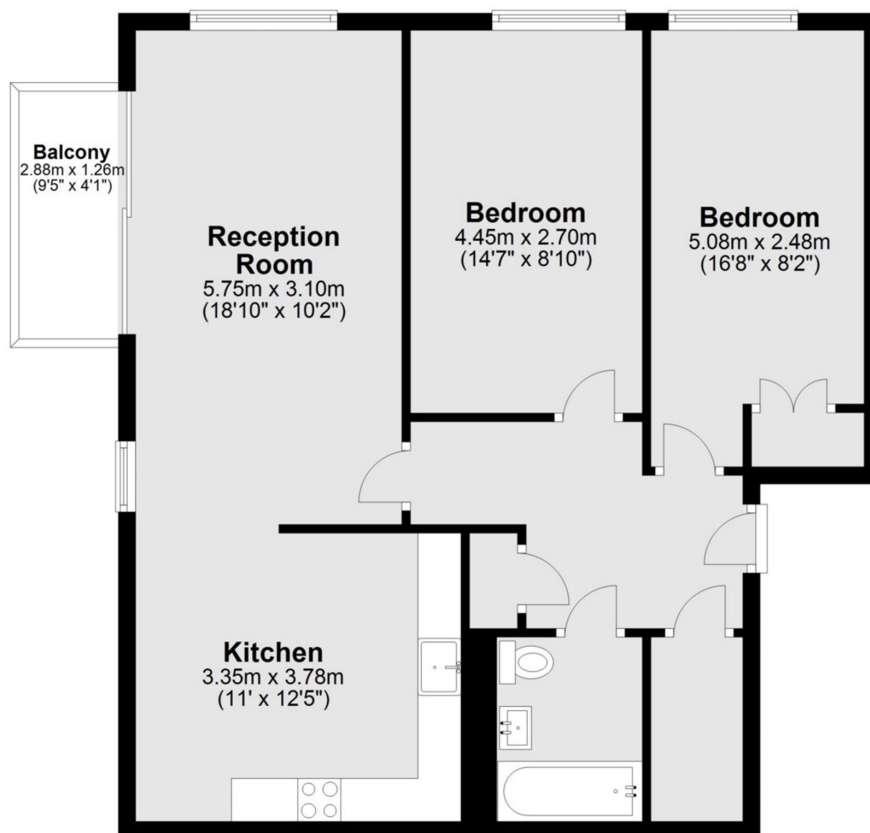
Union Lane is a modern development which is just a few hundred yards from the green expanses of Syon Park and the River Thames. Within half a mile to Syon Lane Station and easy commuting distance from the M4 into Central London.

Features

- Modern Development
- Large Open-Plan Reception
- Two Double Bedrooms
- Private Balcony
- No Onward Chain
- Fantastic Location

Union Lane,
Isleworth, TW7

Fourth Floor



Main area: Approx. 72.1 sq. metres (776.3 sq. feet)
Plus balconies, approx. 3.6 sq. metres (38.9 sq. feet)

Dexters

St Margarets
1 Chertsey Road
St Margarets
TW1 1LR
Sales
020 8744 9400

Energy Rating: B. We aim to make our particulars both accurate and reliable. However they are not guaranteed; nor do they form part of an offer or contract. If you require clarification on any points then please contact us, especially if you're traveling some distance to view. Please note that appliances and heating systems have not been tested and therefore no warranties can be given as to their good working order.

 **RICS** | Regulated
Estate Agent
and Letting Agent

[dexters.co.uk](https://www.dexters.co.uk)