



White Lodge Close, TW7

£369,950

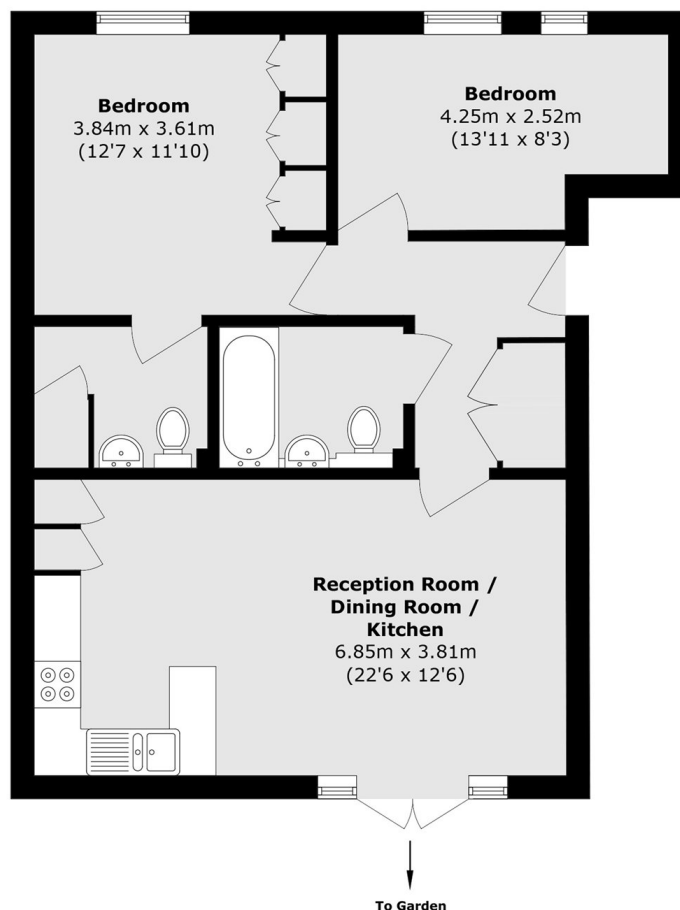
A spacious and bright two double bedroom ground floor apartment situated in a modern and popular development. The property features a wonderful open-plan reception/kitchen, a family bathroom and double French doors leading out to a private patio area overlooking the communal gardens. Further benefits include an en suite shower room, allocated parking, a secure video entry system, and well-maintained communal gardens. Presented in great condition throughout, this apartment provides excellent living space and an ideal ground floor layout.

White Lodge Close is a residential development moments away from the shops and bars of Old Isleworth and is within easy reach of Syon Park and Richmond town centre.

Features

Bright And Spacious Flat
Large Living Room
Ground Floor
Two Double Bedrooms
Two Bathrooms
Allocated Parking

White Lodge Close, Old Isleworth, TW7



Total area (approx.): 68.6 sq. m (738.4 sq. ft)