



## Queens Terrace, TW7

£499,950

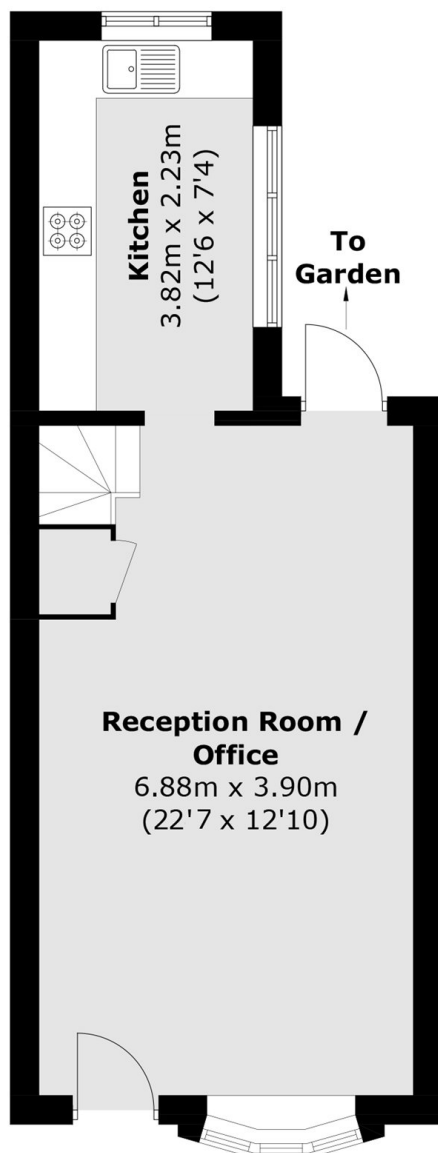
This attractive end-of-terrace Victorian cottage offers a great balance of space and potential. The property features two double bedrooms and a family bathroom on the first floor, providing comfortable accommodation with a traditional layout. On the ground floor, there is a generous reception room with a well appointed kitchen to the rear, overlooking a private courtyard garden. This fantastic property is offered with no onward chain and presents scope to extend (STPP), giving buyers the opportunity to update or enlarge the home to suit their needs.

Queens Terrace is located within a lovely cul-de-sac in Old Isleworth within half a mile of the River Thames and its tow path walks to Richmond and St Margarets village with its train station, cafés, bars and restaurants.

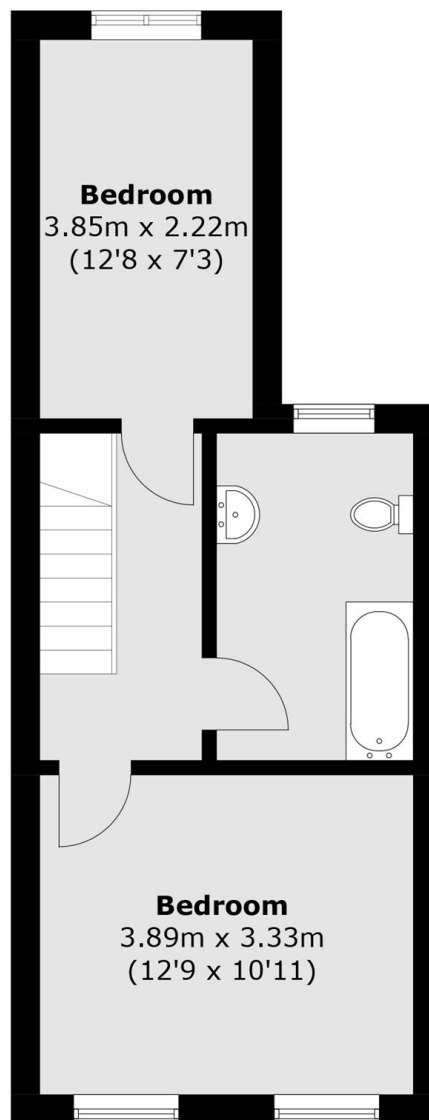
### Features

- Victorian Cottage
- End-Of-Terrace
- Two Bedrooms
- First Floor Bathroom
- Private Courtyard Garden
- No Onward Chain

# Queens Terrace, Old Isleworth, TW7



**Ground Floor**



**First Floor**

Total area (approx.): 72.8 sq. m (783.6 sq. ft)