



Morley Road, TW1
£2,100,000

Dexters



Morley Road, TW1

This attractive four bedroom semi-detached Edwardian house offers generous proportions, elegant period features and excellent potential to further enhance and extend (STPP). Situated on a sought after residential road, this fantastic property combines timeless character with comfortable family living.

Upon entering the property, you are greeted by a welcoming hallway leading to a spacious double through reception room featuring high ceilings, large bay windows and charming original details. To the rear, a downstairs WC adds convenience and a large kitchen and dining room spans the width of the house, opening directly onto the private rear garden with side access.

Upstairs, the spacious master bedroom is flooded with natural light and benefits from large built in wardrobes and an en suite bathroom. There are three further bedrooms on the first floor, two with integrated wardrobe space, along with a family bathroom. The property also benefits from off street parking at the front and is offered to the market with no onward chain.

Morley Road is a desirable residential road in East Twickenham, within 0.3 miles of the River Thames and Richmond Bridge. On the doorstep are Richmond town centre's shops, restaurants and mainline train station's fast links to London Waterloo. Marble Hill Park is also close by as well as St Margarets village with its shops, restaurants, cafes and train station.

Features

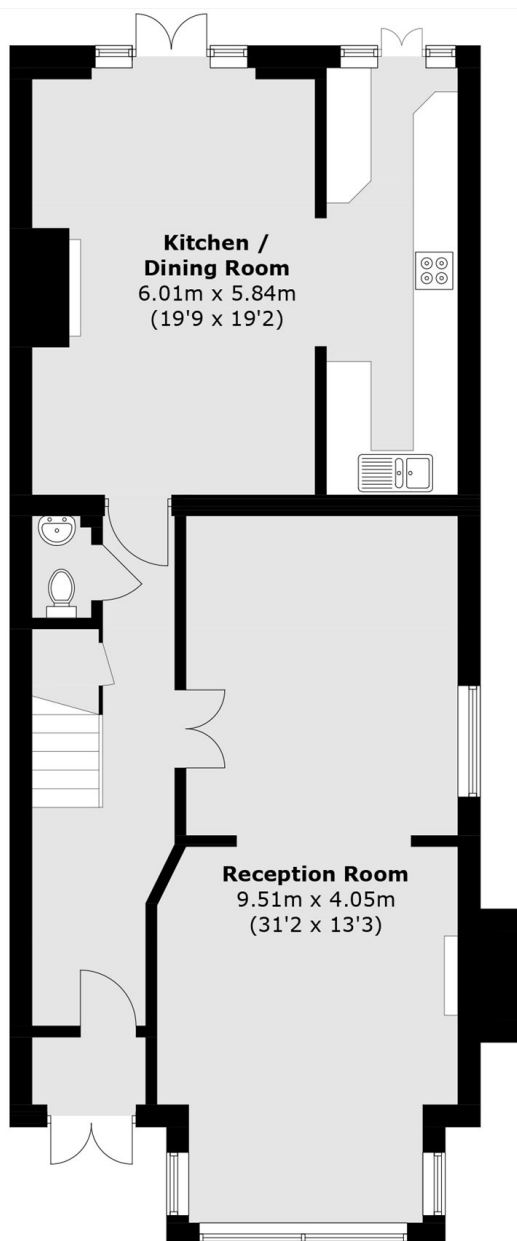
- Edwardian Family Home
- Semi-Detached
- Four Bedrooms
- Two Bathrooms
- Off-Street Parking
- Potential To Extend STPP



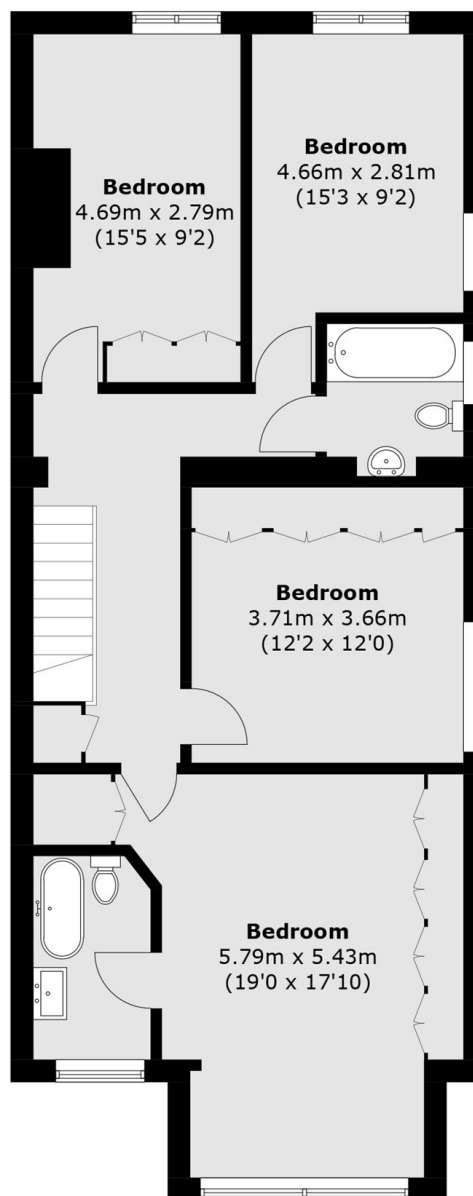




Morley Road, East Twickenham, TW1



Ground Floor



First Floor

Total area (approx.): 170.9 sq. m (1,839.6 sq. ft)