



## Union Lane, TW7

### £350,000

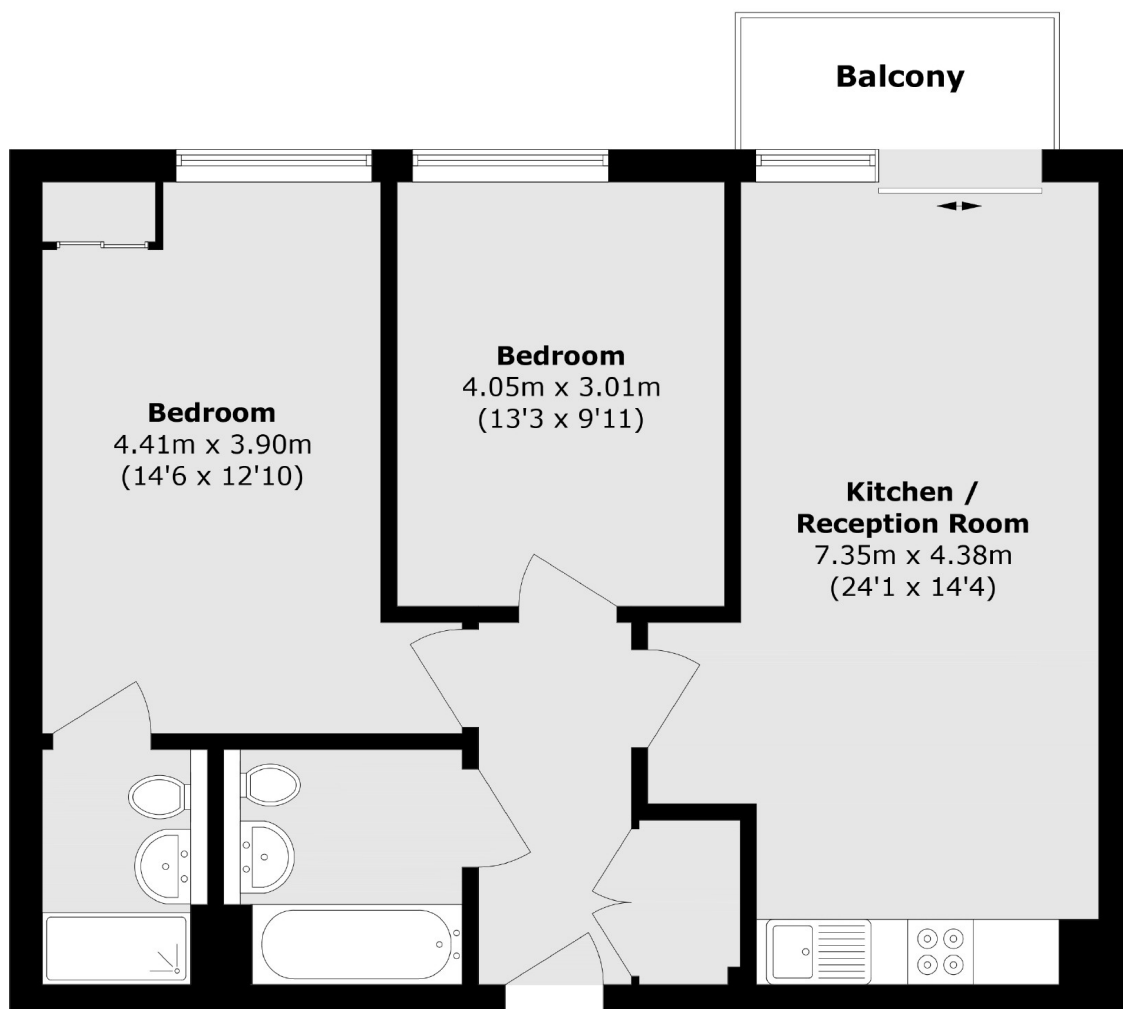
A beautifully presented top floor, two double bedroom, two bathroom purpose built apartment offered to the market in immaculate condition. The property further benefits from a private balcony and long lease.

Union Lane is a popular modern development situated within 0.5 miles of Syon Lane Station with its links to London Waterloo. The green open space of Syon Park is 50 feet away and the River Thames with its tow path walks into Richmond is only 0.4 miles away.

### Features

- Modern Development
- No Onward Chain
- Fourth Floor
- Fantastic Location
- Private Balcony
- Lift Serviced

# Union Lane, Old Isleworth, TW7



Total area (approx.): 71.6 sq. m (770.7 sq. ft)

Balcony area (approx.): 3.4 sq. m (36.5 sq. ft)