



Haliburton Road, TW1

£3,295 Per calendar month

This charming three bedroom home offers spacious and versatile accommodation making it ideal for family living. The heart of the house is a bespoke kitchen and dining area, perfect for entertaining, with French doors that open onto a mature rear garden designed to be enjoyed year round.

Haliburton Road is within half a mile of the River Thames and its tow path walks into Richmond. Close to St Margarets village and mainline train station that has direct links to London Waterloo.

Features

- Victorian House
- Three Double Bedrooms
- Two Reception Rooms
- Two Bathrooms
- Large Garden
- Versatile Outhouse



Haliburton Road, TW1

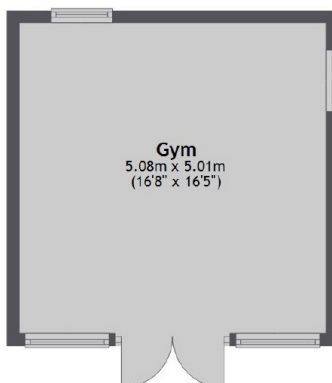
On the ground floor a cosy front reception room sits alongside a bespoke kitchen and dining area complete with French doors that open onto a generous mature rear garden; an ideal space for entertaining throughout the year. Arranged over the upper floors are three well-proportioned bedrooms including a large master suite with built-in wardrobes and en suite bathroom. Two further double bedrooms with fitted wardrobes are served by a stylish family bathroom.

Additional highlights include a downstairs WC, ample storage and a versatile outhouse currently used as a gym but equally suited as a home office or studio. Blending comfort, practicality, and excellent entertaining space, this is an ideal home for a growing family.

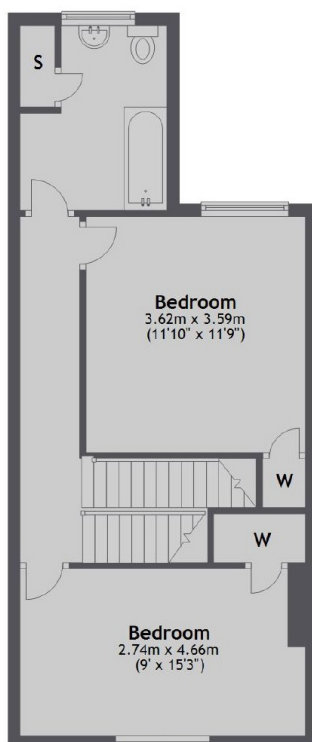


Haliburton Road, Twickenham, TW1

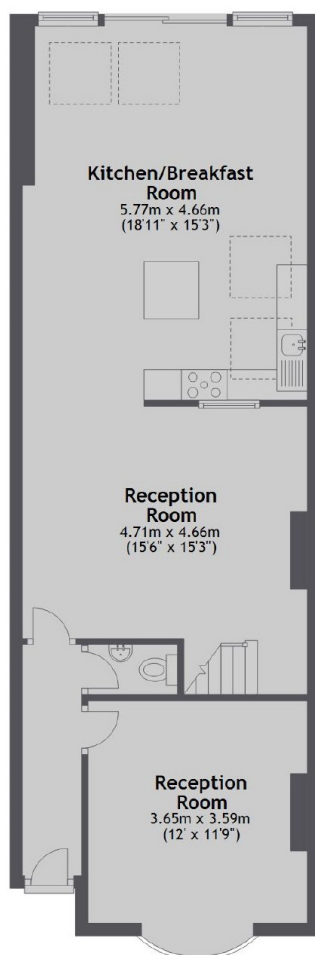
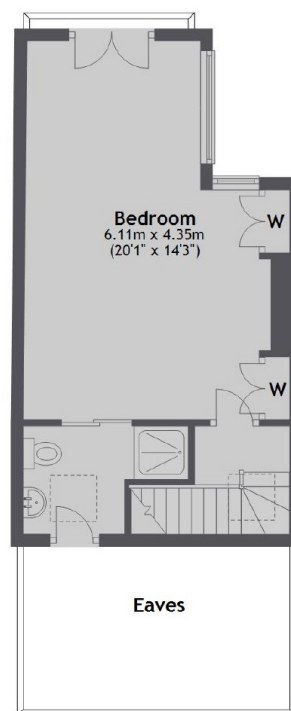
Ground Floor



First Floor



Second Floor



Main area: Approx. 146.4 sq. metres (1575.4 sq. feet)
Plus outbuildings, approx. 25.5 sq. metres (274.1 sq. feet)