



Crown Road, TW1

£1,550 Per calendar month

A spacious and well-presented one bedroom purpose built apartment in the heart of St Margarets. Ideal for a single occupant or couple. The property features a generous reception room, modern bathroom and access to communal gardens. Situated close to Marble Hill Park, with non-allocated parking and a sought-after village location.

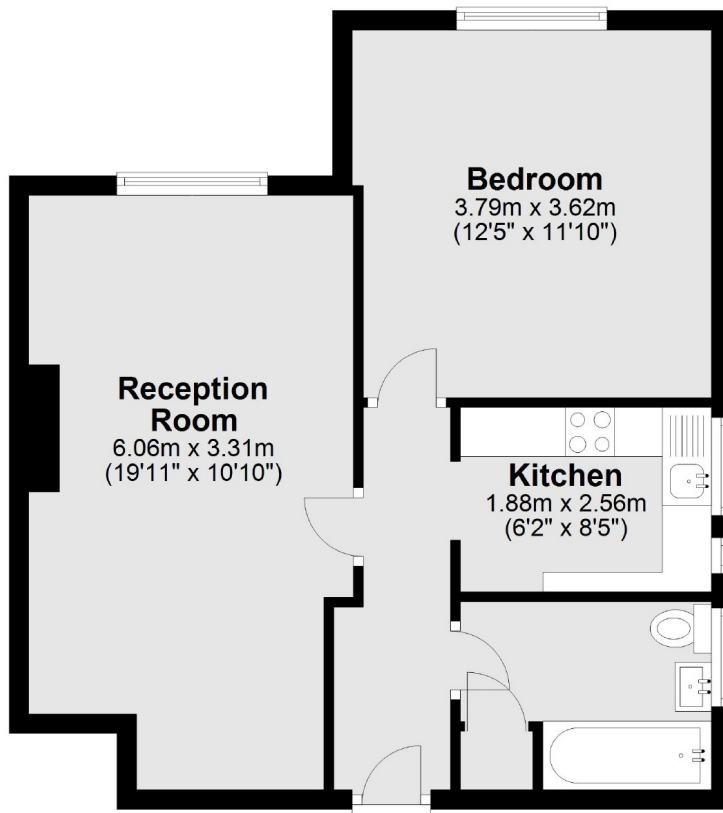
Crown Road is within 0.3 miles of St Margarets Station and 0.7 miles from Richmond town centre with its mainline station and underground District Line links into central London. Marble Hill Park, the River Thames and Moor Mead park are also close by.

Features

- One Double Bedroom
- Purpose-Built Apartment
- Large Reception Room
- Close To Marble Hill Park
- Non Allocated Parking
- Village Location

Crown Road, Twickenham, TW1

Second Floor



Total area: approx. 47.5 sq. metres (511.5 sq. feet)