



## Napier Road, TW7

£3,200 Per calendar month

A beautifully modernised Victorian family home in the heart of Old Isleworth. Boasting four double bedrooms, a spacious double reception room and an extended kitchen/dining room with bi-fold doors, this home perfectly balances period charm with contemporary living.

Napier Road is a popular residential road full of Victorian family houses. Situated 0.7 miles from the banks of the River Thames with its tow path walks into Richmond. Within 1.0 mile from St Margarets village high street with its boutique shops, cafes and mainline station with links to London Waterloo.

### Features

- Victorian Family Home
- Four Double Bedrooms
- Stylish Extended Kitchen
- Double Reception Room
- Period Features
- Landscaped Garden & Storage





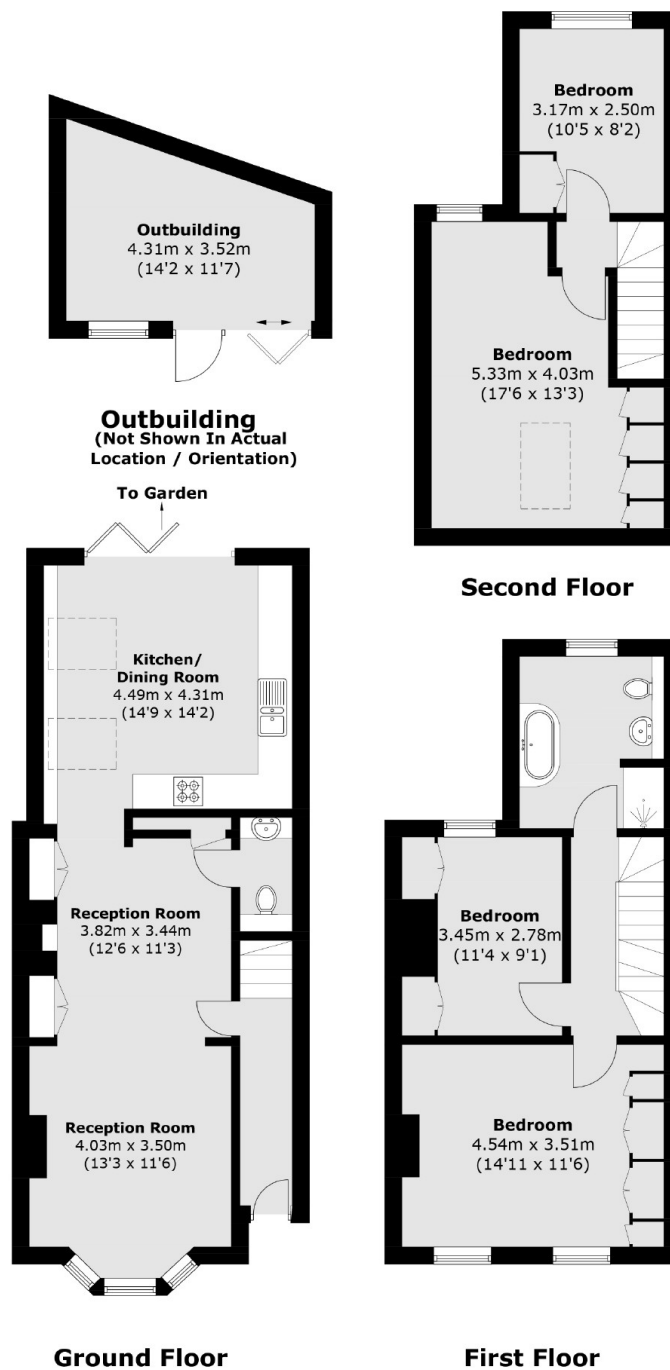
## Napier Road, TW7

Immaculately presented throughout, with high ceilings, original features, a downstairs WC and a landscaped garden with a useful summerhouse for storage.





# Napier Road, Old Isleworth, TW7



Total area (approx.): 123.4 sq. m (1328.2 sq. ft)  
Outbuilding area (approx.): 12.3 sq. m (132.3 sq. ft)

## Dexters

St Margarets  
1 Chertsey Road  
St Margarets  
TW1 1LR  
Lettings  
020 8744 9700

Energy Rating: C. We aim to make our particulars both accurate and reliable. However they are not guaranteed; nor do they form part of an offer or contract. If you require clarification on any points then please contact us, especially if you're traveling some distance to view. Please note that appliances and heating systems have not been tested and therefore no warranties can be given as to their good working order.

**RICS** Regulated  
Estate Agent  
and Letting Agent

dexters.co.uk