



Haliburton Road, TW1

£1,995 Per calendar month

A well-presented two bedroom modern home set over three floors within a private mews development fronting the River Crane. The property features a spacious layout with one bathroom, an additional WC, access to a communal garden and benefits from an allocated parking space.

Cranebank Mews is in a cul-de-sac off of Haliburton Road. Within 0.6 miles of St Margarets village and the station with its regular trains in and out of London Waterloo.

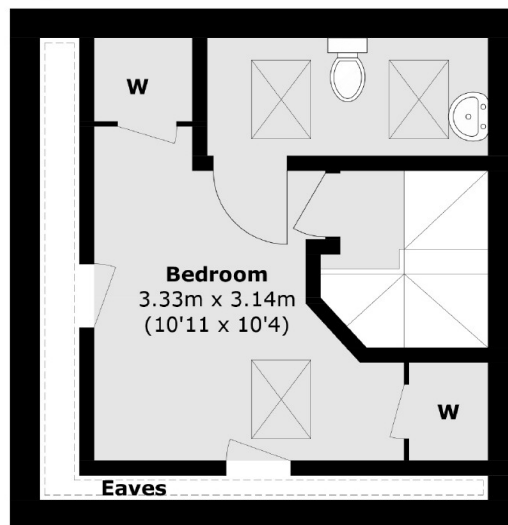
Features

- Private Mews
- Two Bedrooms
- One Bathroom
- Further WC
- Allocated Parking
- Over Three Floors

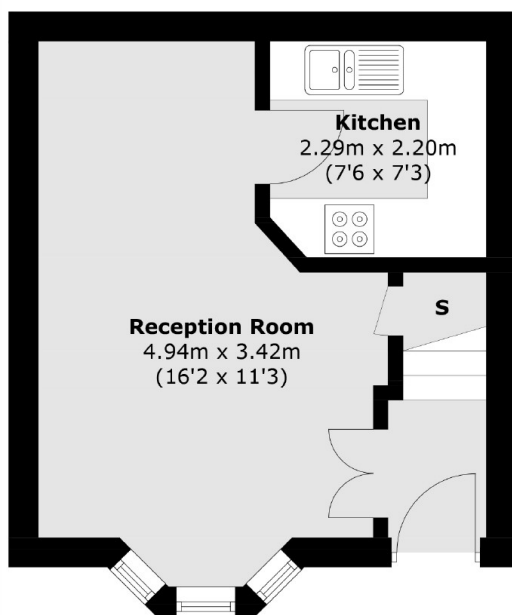
Haliburton Road, St Margarets, TW1



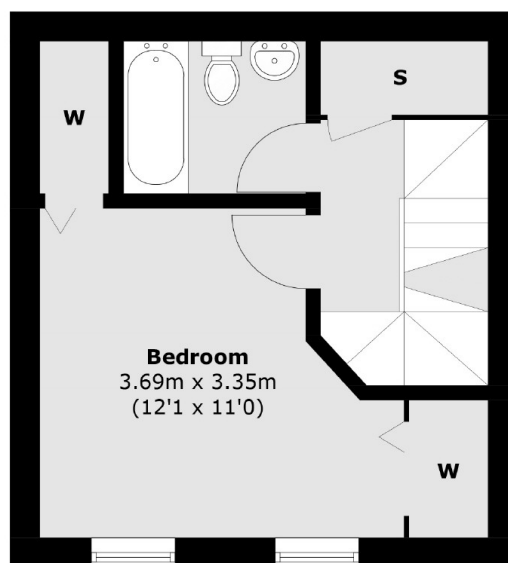
= Reduced headroom below 1.5m / 5'0



Second Floor



Ground Floor



First Floor

Total area (approx.): 63.9 sq. m (687.7 sq. ft)
(Excluding Eaves)