



Burnside Close, TW1
£1,400,000

Dexters



Burnside Close, TW1

Located in a desirable residential area, this impressive double fronted detached property offers spacious and versatile living accommodation ideal for families. Offering four generously sized bedrooms, three bathrooms and multiple reception areas; this home combines comfort, style and practicality. Additionally, the property features attractive front and rear gardens, a private garage and off-street parking for multiple vehicles.

Upon entering, you are welcomed by a spacious hallway that sets the tone for the rest of the property. To the right, a dedicated office provides the perfect space for working from home. The large reception room offers ample space for relaxation and entertaining, while the separate dining room is ideal for more formal gatherings. At the heart of the home is a generously sized kitchen that flows seamlessly into a bright and airy conservatory, creating a wonderful space for everyday living. A useful utility room and a downstairs WC add to the practicality of the ground floor. Upstairs, you'll find four well-proportioned bedrooms. Two of the bedrooms benefit from en suite bathrooms and integrated wardrobes, while a stylish family bathroom serves the remaining rooms.

This popular cul-de-sac is ideally located for commuting within 0.4 miles of Twickenham and St Margarets Station. Easy access to bus routes, close to local shops, pubs, restaurants and Twickenham Stadium.

Features

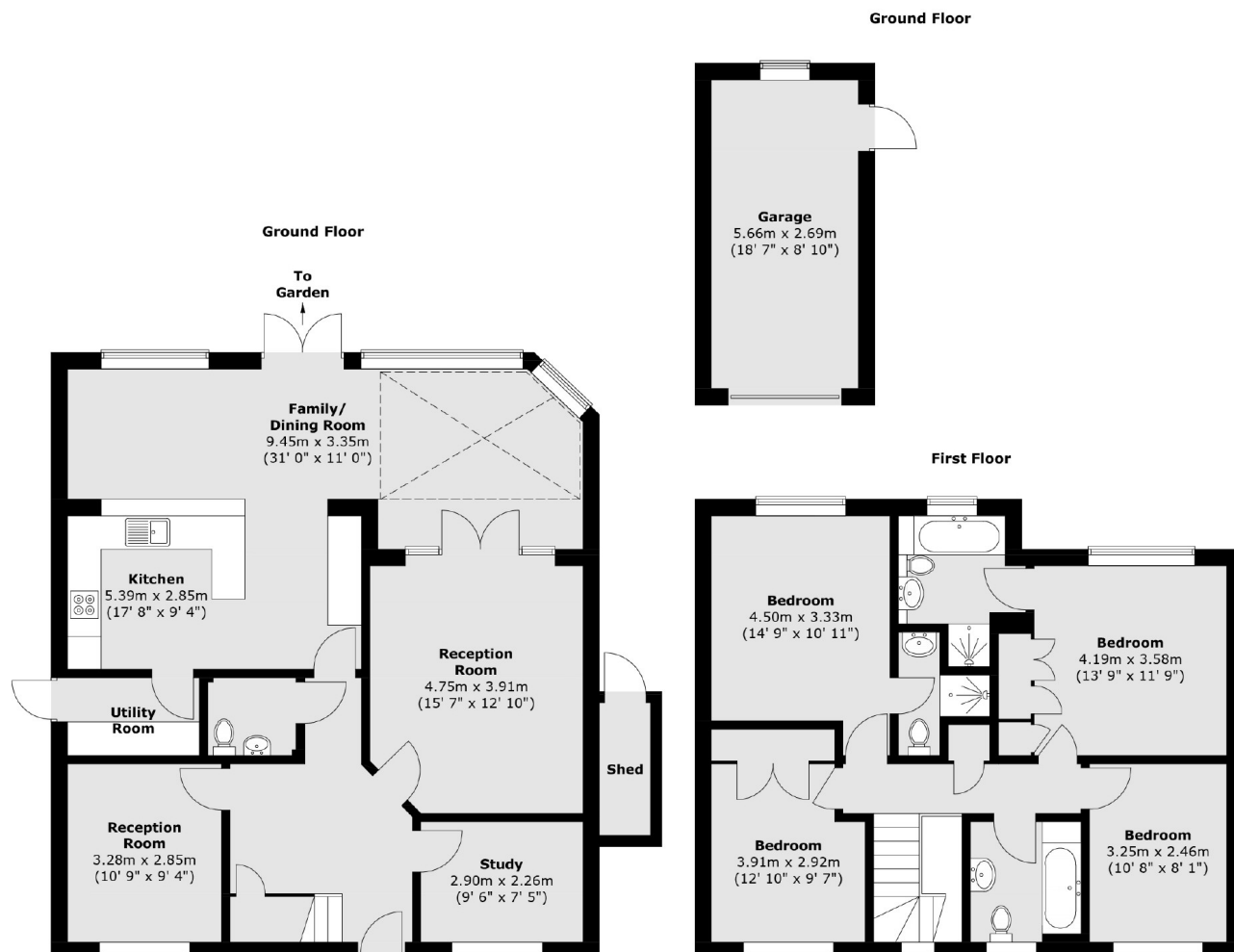
- Detached
- Four Bedrooms
- Three Bathrooms
- Mature Garden
- Garage
- Off-Street Parking







Burnside Close, Twickenham, TW1



Total area (approx.) : 169.7 sq. m (1827 sq. ft)
Total garage area (approx.) : 15.4 sq. m (166 sq. ft)