



Arlington Road, TW1
£385,000

Dexters



Arlington Road, TW1

Located in the sought after area of East Twickenham, is this bright and well proportioned one double bedroom flat. The property offers a generous living space and a practical layout, making it an ideal choice for first-time buyers.

The double bedroom is impressively sized, with plenty of space for storage and additional furnishings, all while maintaining a light and airy feel. The flat also features a modern bathroom and a smartly designed kitchen with everything you need for everyday living. Set within a well-maintained building, residents also benefit from access to a large and beautifully kept communal garden.

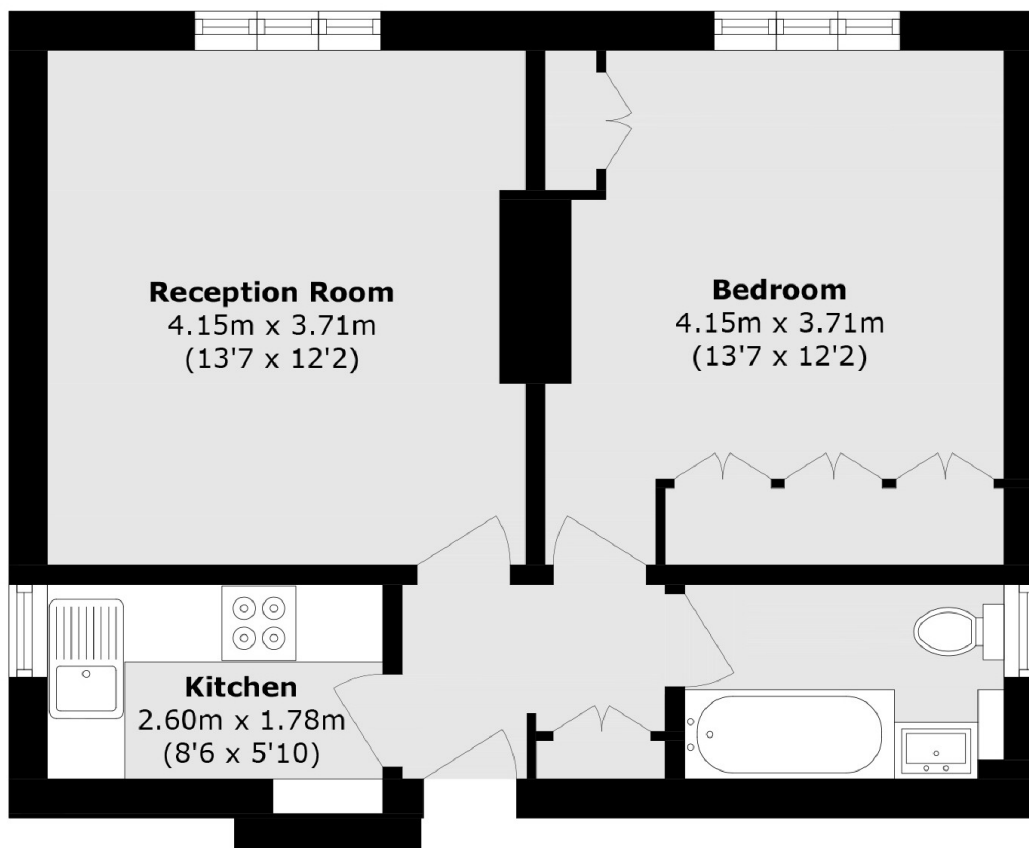
Arlington Road is a sought after spot providing good access for St Margarets village, Marble Hill Park, the River Thames, Richmond Bridge and Richmond Train Station.

Features

- Well Presented Throughout
- One Double Bedroom
- Large Reception Room
- Modern Bathroom
- Communal Garden
- Central Location



Arlington Road, East Twickenham, TW1



Total area (approx.): 42.2 sq. m (454.2 sq. ft)