



The Avenue, TW1

£2,500,000

Built in the 1850's, this exceptional semi-detached Victorian house offers a seamless blend of period elegance and modern luxury. Fully renovated and thoughtfully extended, the property spans four floors and provides an abundance of space, ideal for family living while retaining its timeless charm.

The Avenue is conveniently positioned within close proximity of the River Thames with it's towpath walk into Richmond town centre, ideal for the busy commuter who wants quick access into London using the District Line. Only a short walk into St Margarets village where you will find many cafés, shops and restaurants. An excellent choice of schools are nearby.

Features

- Six Bedrooms
- Four Bathrooms
- Basement
- Utility Room
- South-Facing Garden
- Off-Street Parking

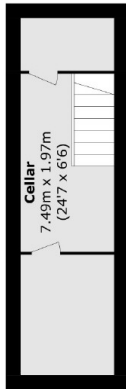


The Avenue, TW1

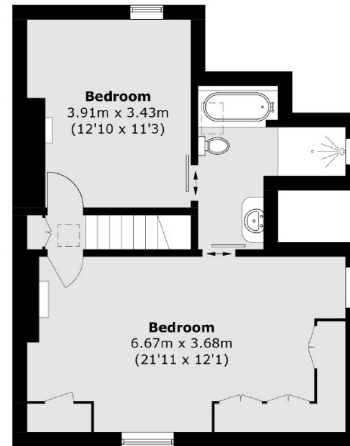
The impressive formal reception room offers an elegant entrance, leading onto the second reception both with feature fireplaces, wood burners, high ceilings and intricate cornicing, bespoke open plan kitchen/dining area featuring underfloor heating, integrated speakers, high-end appliances and ample storage, ideal for daily life and entertaining. Full-height glass doors open to a large south-facing garden. Upstairs are five spacious bedrooms across two floors, each with unique charm. Three well-appointed bathrooms include luxurious fittings, underfloor heating and timeless design. The principal bedroom has a spacious en suite and customised fitted wardrobes and walk-in wardrobe. A self-contained studio with a separate entrance, shower room and living/sleeping area, suitable for various uses.



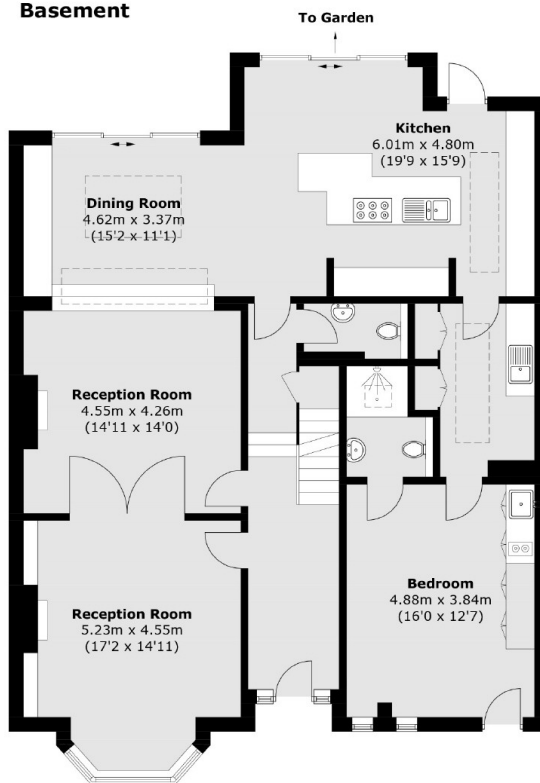
The Avenue, St Margarets, TW1



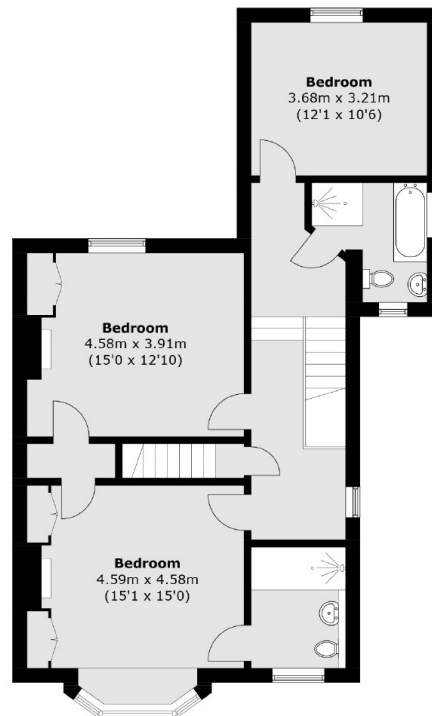
Basement



Second Floor



Ground Floor



First Floor

Total area (approx.): 281.5 sq. m (3,030.0 sq. ft)
(Including Basement)