



## Percy Road, TW7

£2,495 Per calendar month

A lovely three bedroom Victorian terraced family home packed full of period features and offering spacious, well proportioned accommodation throughout. Ideal for a small family or couple to enjoy.

Within the Catchment for the Blue School, Percy Road is a prime residential cul-de-sac within Old Isleworth, moments from the river Crane, and within a quarter mile of the river Thames with its tow path walks into Richmond.

### Features

- Pretty Victorian House
- Double Reception Room
- Three Bedrooms
- Modern Bathroom
- Well Maintained Garden
- Downstairs WC

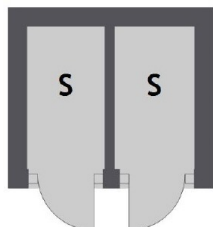


Percy Road, TW7

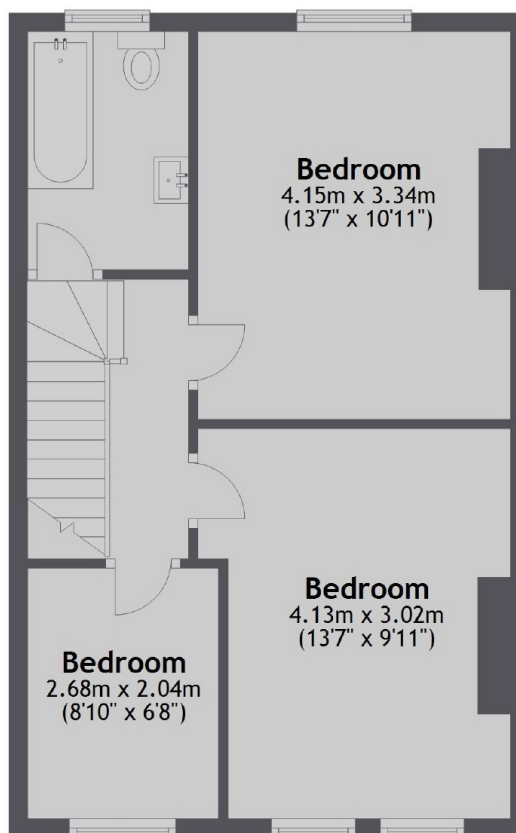
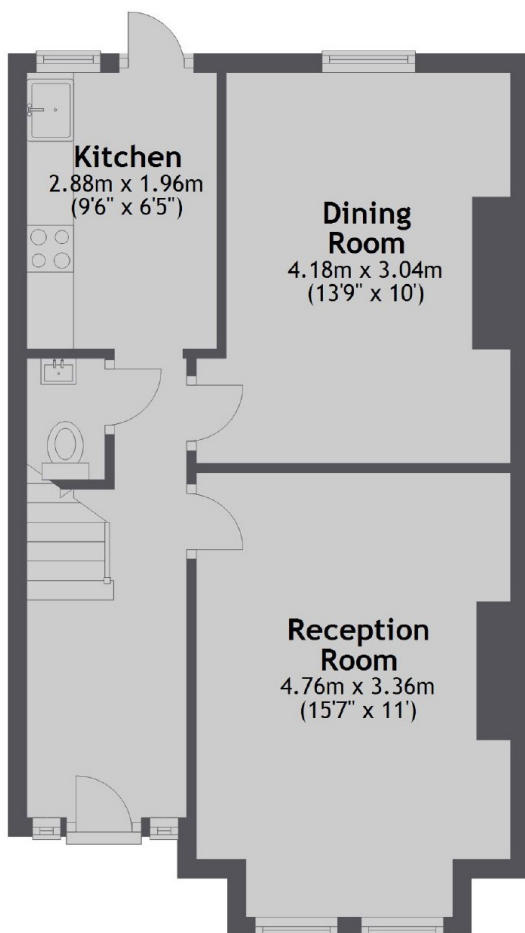


# Percy Road, Old Isleworth, TW7

## Ground Floor



## First Floor



Main area: Approx. 87.5 sq. metres (942.2 sq. feet)  
Plus outbuildings, approx. 2.8 sq. metres (29.6 sq. feet)

# Dexters

St Margarets  
1 Chertsey Road  
St Margarets  
TW1 1LR  
Lettings  
020 8744 9700

Energy Rating: C. We aim to make our particulars both accurate and reliable. However they are not guaranteed; nor do they form part of an offer or contract. If you require clarification on any points then please contact us, especially if you're traveling some distance to view. Please note that appliances and heating systems have not been tested and therefore no warranties can be given as to their good working order.

 **RICS** | Regulated  
Estate Agent  
and Letting Agent

dexters.co.uk