



Manor House Way, TW7
£299,950

Dexters



Manor House Way, TW7

This well proportioned, one bedroom ground floor apartment is a fantastic opportunity for first time buyers, downsizers, or investors looking for a low maintenance property with excellent indoor and outdoor space. This property comes with a private patio, a garage and is offered to the market with no onward.

The accommodation includes a generous reception room with space to dine, a large double bedroom, a fully fitted kitchen and a bathroom. A standout feature is the direct access to a private patio, leading to a well maintained communal garden.

Manor House Way is a small development within 0.2 miles of the River Thames and its tow path walks into Richmond. St Margarets village with its boutique shops, cafes and main line train station with links to London Waterloo is only 1.2 miles away.

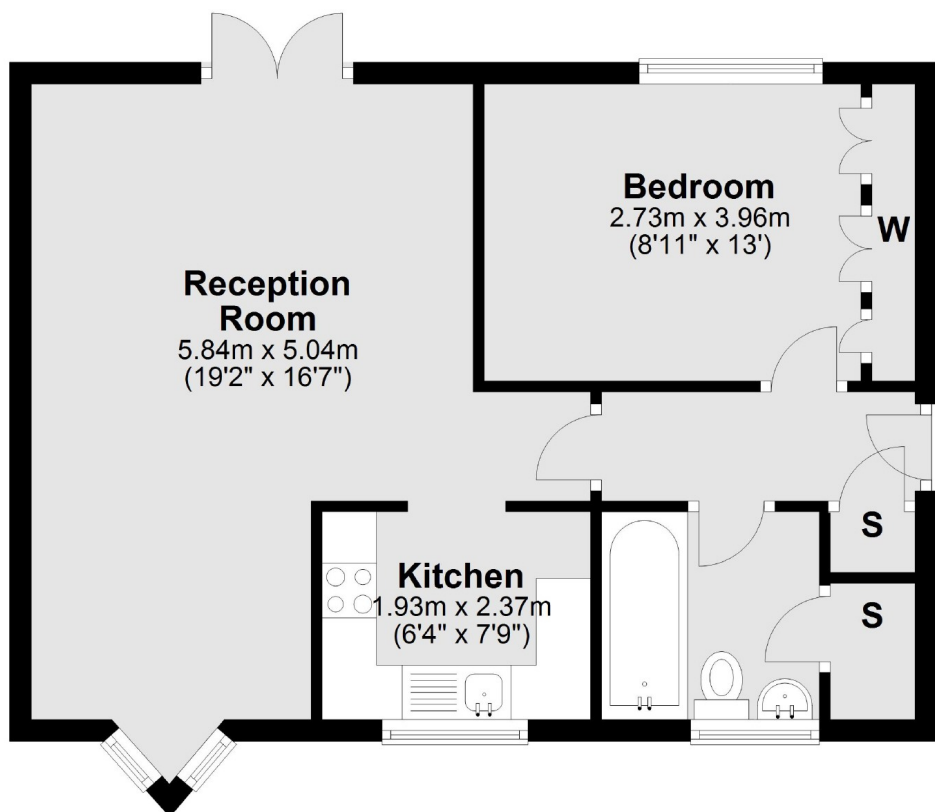
Features

- Ground Floor Apartment
- One Double Bedroom
- Well Proportioned
- Direct Access To Private Patio
- Garage
- No Onward Chain



Manor House Way, Isleworth, TW7

Ground Floor



Total area: approx. 47.7 sq. metres (513.6 sq. feet)

Dexters

St Margarets
1 Chertsey Road
St Margarets
TW1 1LR
Sales
020 8744 9400

Energy Rating: C. We aim to make our particulars both accurate and reliable. However they are not guaranteed; nor do they form part of an offer or contract. If you require clarification on any points then please contact us, especially if you're traveling some distance to view. Please note that appliances and heating systems have not been tested and therefore no warranties can be given as to their good working order.

 **RICS** | Regulated
Estate Agent
and Letting Agent

[dexters.co.uk](https://www.dexters.co.uk)