



Amyand Park Road, TW1

£1,850 Per calendar month

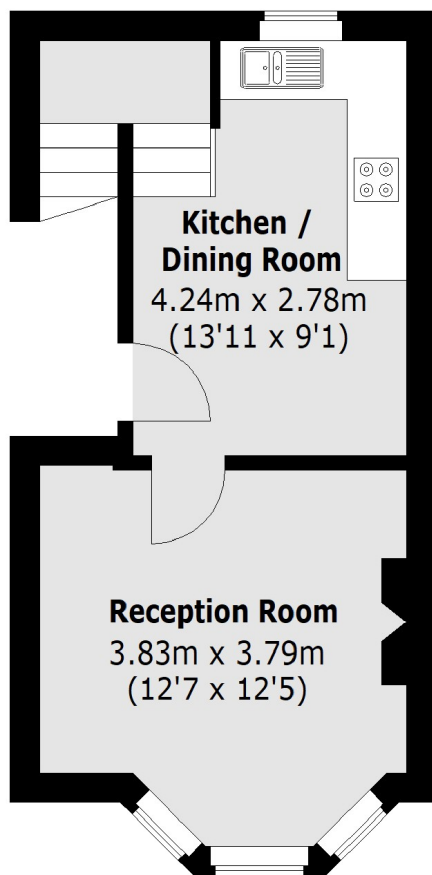
A well presented two bedroom split-level flat in the heart of St Margarets, perfect for a couple or family. The property boasts a wealth of character and charm with a twist of modern living.

Amyand Park Road is a popular residential road in the heart of St Margarets. Situated equidistant from the fast train service at Twickenham to London Waterloo which is 0.3 miles away and 0.3 miles to The village high street of St Margarets.

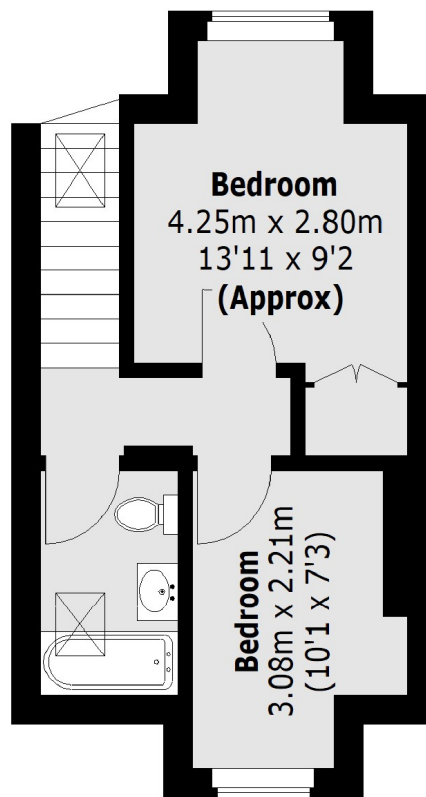
Features

- Split-Level
- Victorian Conversion
- Unfurnished
- Modern Kitchen
- Two Bedrooms
- Modern Bathroom

Amyand Park Road, St Margarets, TW1



First Floor



Second Floor

Total area (approx.): 51.4 sq. m (553.2 sq. ft)