



## Egerton Drive, TW7

£2,595 Per calendar month

A beautifully presented two-bedroom Mews House set within a private gated development on the banks of the River Thames. Originally a Victorian stable block, this unique home offers access to landscaped communal gardens in an exclusive riverside community.

This private gated community has its own landscaped communal gardens, bordering the River Thames. Ideal location for easy access into St Margaret's and Richmond town centre.

### Features

- Mews House
- Two Bedrooms
- Allocated Off Street Parking
- Bathroom And En-Suite
- Private Rear Courtyard
- EV Car Charging Station



## Egerton Drive, TW7

With a light and airy feel, and renovated to a high standard, the downstairs open plan living and kitchen area features bi-fold doors leading out onto a private terrace.

The kitchen is contemporary and high specification and benefits from a full range of integrated Siemens appliances including an induction hob.

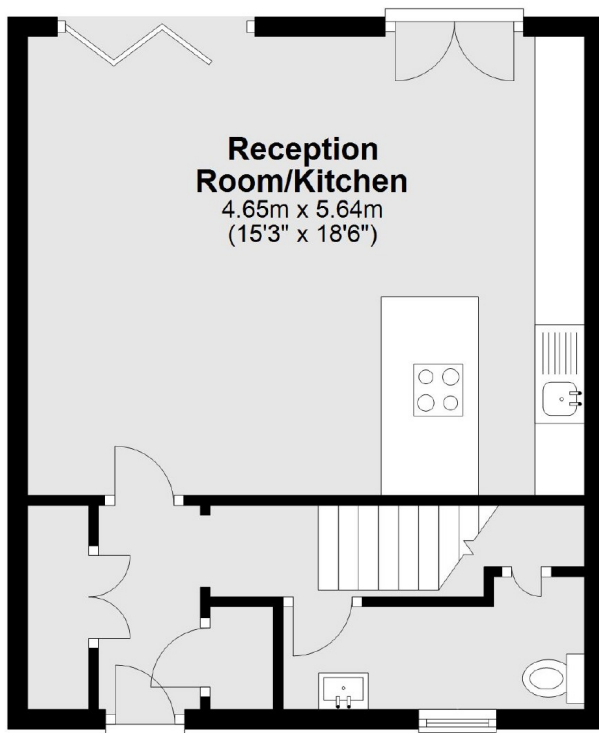
There is a downstairs cloakroom and utility room, two good sized bedrooms, both with built in storage, and two bathrooms (one shower ensuite).



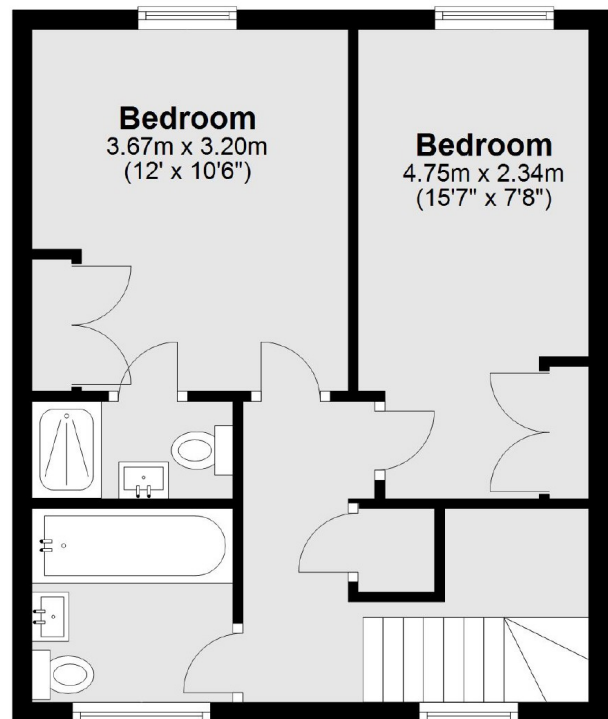


Egerton Drive,  
Old Isleworth, TW7

**Ground Floor**



**First Floor**



Total area: approx. 76.9 sq. metres (827.5 sq. feet)