



Clevedon Road, TW1

£1,795,000

Dexters



Clevedon Road, TW1

Set within the prestigious Richmond Bridge Estate, is this fantastic three double bedroom ground floor apartment with a private terrace. Perfectly positioned to enjoy unspoilt views over the communal gardens, water feature and the River Thames.

The property comes with three double bedrooms, one of which is currently used as a dining room. The reception room is large and spacious with plenty of entertaining space and benefitting from dual aspect views. There are two bathrooms and separate WC, the modern fitted kitchen has been recently refurbished.

Conveniently located on the ground floor near to the 24 hour concierge. The property comes with a long lease, secure allocated parking with storage units, access to secure bike storage and beautiful communal gardens.

Richmond Bridge Estate is a highly sought after development with secure underground parking, access to a gym, concierge service, impressive communal gardens and views of the River Thames. The Richmond Bridge Estate is a secure gated development situated moments from the River Thames, Richmond town centre and a short distance from Richmond Station, St Margarets Station and Marble Hill Park.

Features

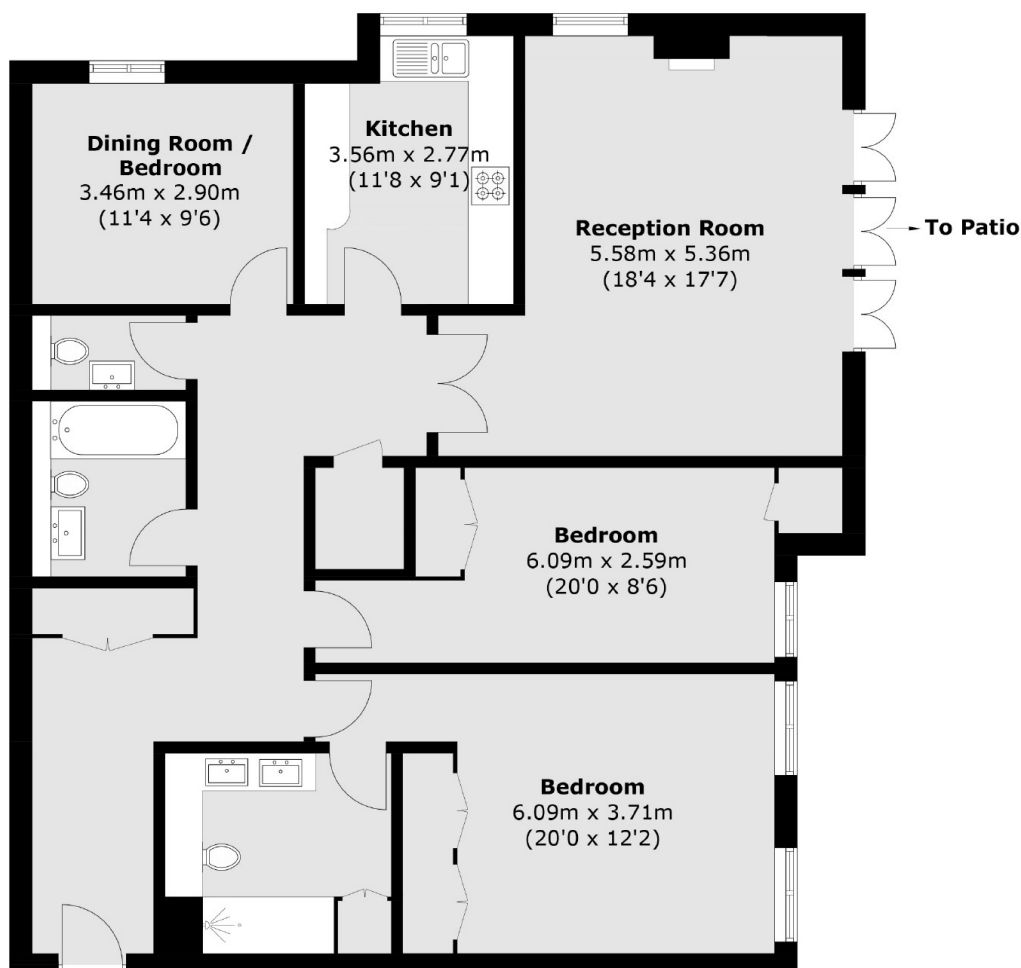
- Gated Riverside Development
- Long Lease
- No Chain
- Off-Street Parking
- Three Double Bedrooms
- Two Bathrooms







Clevedon Road, Twickenham, TW1



Total area (approx.): 123.5 sq. m (1,329.3 sq. ft)