

## Union Lane, TW7

**£1,600** Per calendar month

A well presented two double bedroom apartment situated in this modern development. The living room is spacious and bright, there is direct access onto a balcony to enjoy and two bathrooms (one en suite).

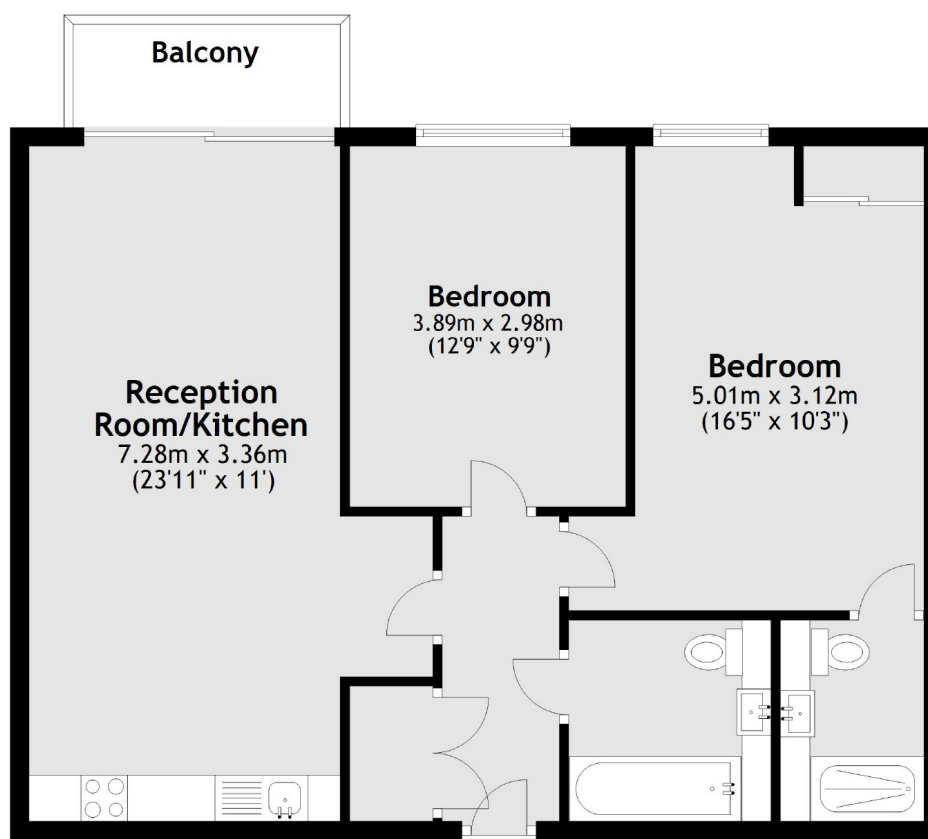
Union Lane is a modern development which is just a few hundred yards from Syon Park and the River Thames. Within a mile from Isleworth train station and easy commute to the M4 into Central London.

### Features

- Beautifully Presented
- Balcony
- Open Plan Living Room
- Two Double Bedrooms
- Two Bathrooms
- Parking Upon Request

# Union Lane, Isleworth, TW7

## Fourth Floor



Total area: approx. 70.3 sq. metres (756.3 sq. feet)