



## Shrewsbury Walk, TW7

£2,100 Per calendar month

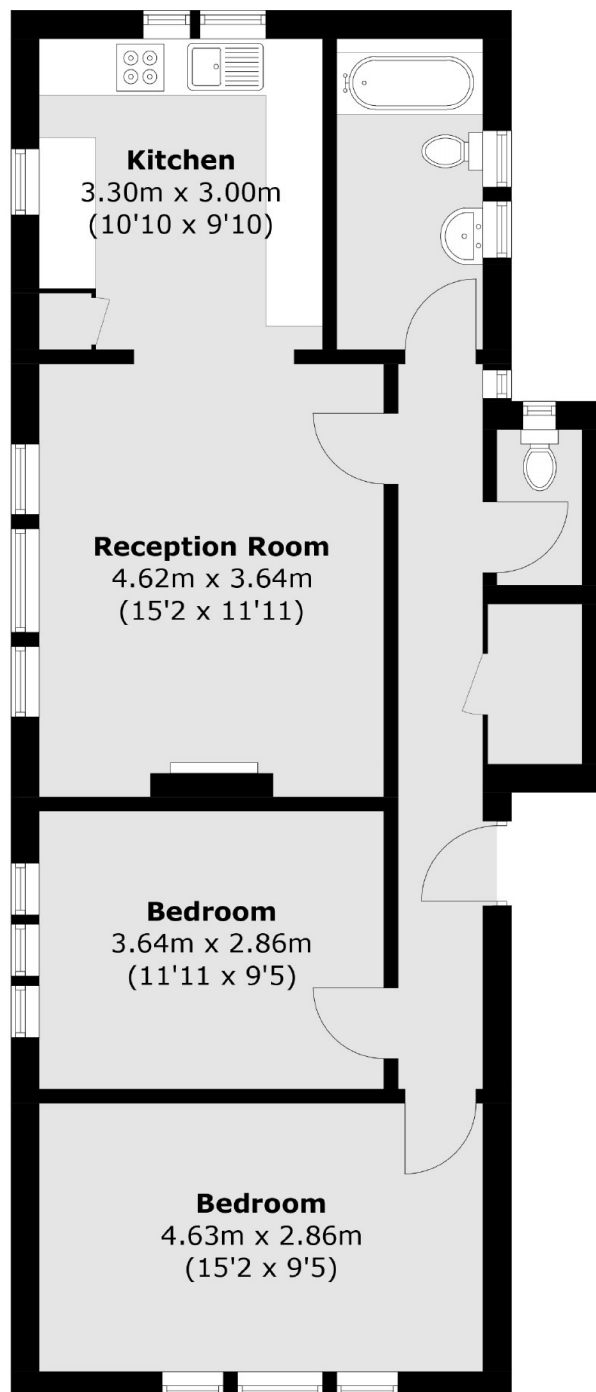
A large two double bedroom apartment in the heart of Old Isleworth. With a bright, open-plan kitchen and living area, a family bathroom and separate WC.

Shrewsbury Walk is located within a mile of Isleworth mainline train station and has both easy access to the River Thames and to the local high street amenities.

### Features

- Two Double Bedrooms
- Open-Plan Living Room
- Bright and Spacious
- Built In Storage
- Unfurnished
- Close To The River

# Shrewsbury Walk, Old Isleworth, TW7



Total area (approx.): 70.4 sq. m (757.8 sq. ft)

## Dexters

St Margarets  
1 Chertsey Road  
St Margarets  
TW1 1LR  
Lettings  
020 8744 9700

Energy Rating: . We aim to make our particulars both accurate and reliable. However they are not guaranteed; nor do they form part of an offer or contract. If you require clarification on any points then please contact us, especially if you're traveling some distance to view. Please note that appliances and heating systems have not been tested and therefore no warranties can be given as to their good working order.

 **RICS** | Regulated  
Estate Agent  
and Letting Agent

[dexters.co.uk](https://www.dexters.co.uk)