



Heathcote Road, TW1

£1,950 Per calendar month

A beautiful two double bedroom ground floor apartment set within a gated development and close to the river. This property comes with an allocated parking space and is offered fully furnished.

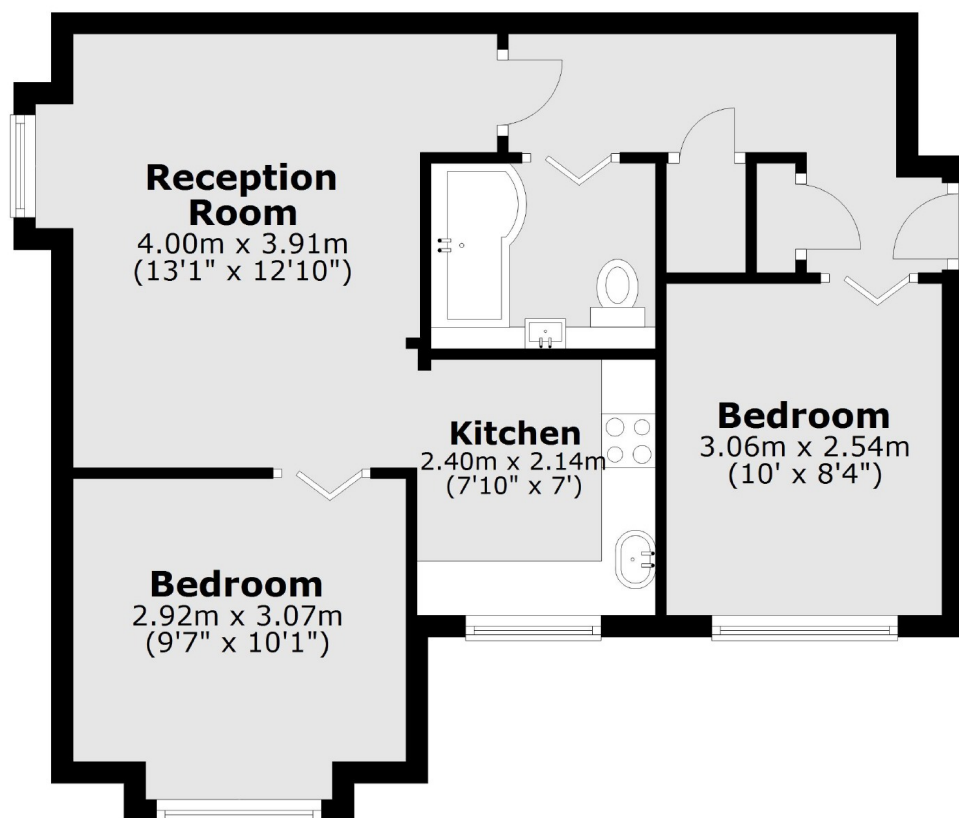
Only moments from the River Thames and its short stroll into Richmond. St Margarets village high street with its train station, shops and cafes is only 0.5 miles away.

Features

- Two Double Bedrooms
- Private Road
- Allocated Parking Space
- Gated Development
- Close To The River
- Communal Garden

Heathcote Road, St Margarets, TW1

Ground Floor



Total area: approx. 47.5 sq. metres (511.6 sq. feet)