



## Lower Square, TW7

£299,950

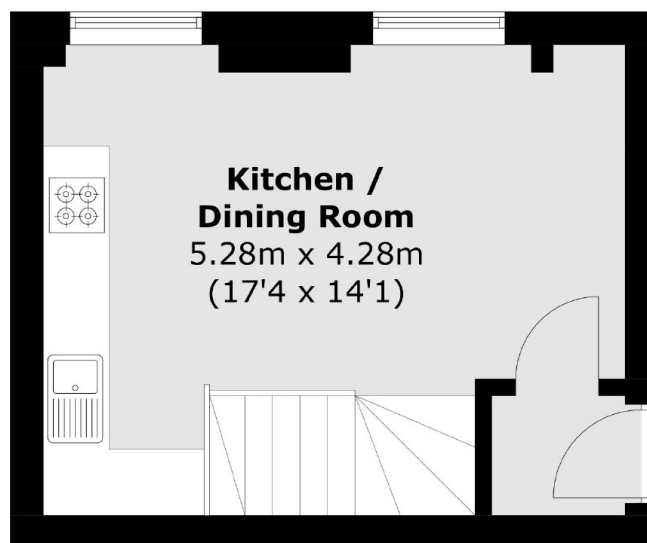
Set on the ground floor of a prestigious Grade II Listed period building, is this impressive one double bedroom apartment. Offering duplex living across the first and lower ground floor, this property also comes with with an allocated off-street parking space, no onward chain and is not to be missed.

Lower Square is a quiet picturesque spot on the banks of the River Thames within 1.0 mile of St. Margarets Village with its boutique shops, cafes and St Margarets Station which has direct links to London Waterloo.

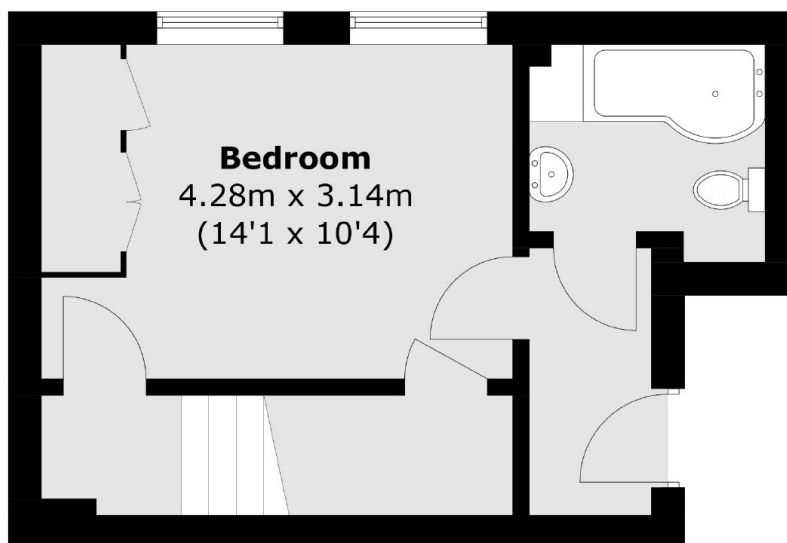
### Features

- Period Conversion
- Newly Decorated
- Riverside Location
- Allocated Parking
- No Onward Chain
- Grade II Listed Period Building

# Lower Square, Old Isleworth, TW7



**Ground Floor**



**Lower Ground Floor**

Total area (approx.): 48.5 sq. m (522.0 sq. ft)