



## St. Margarets Road, TW1

£1,750 Per calendar month

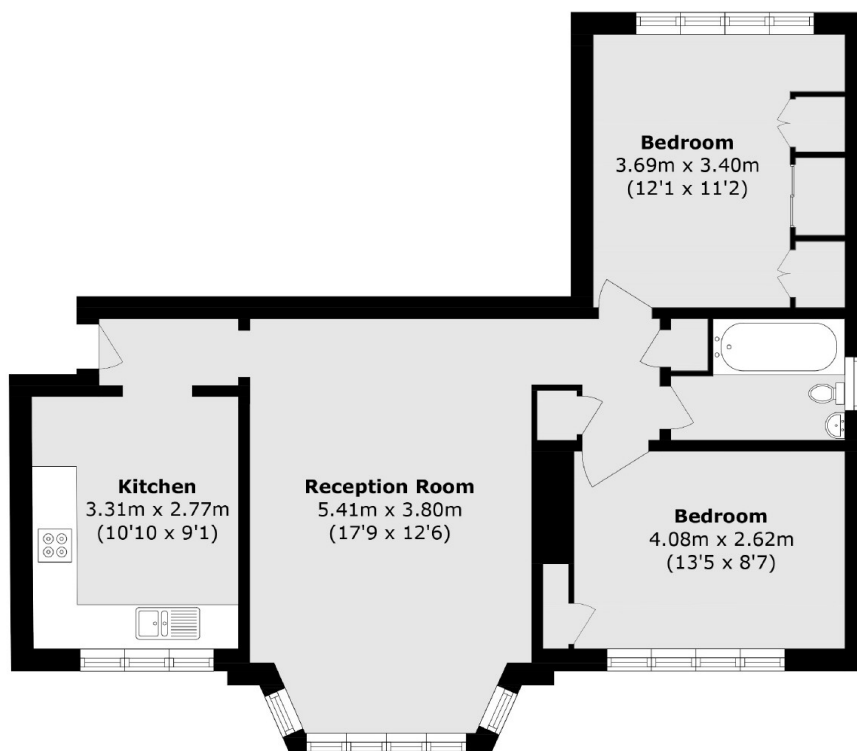
A bright and spacious two double bedroom apartment with a generous reception room, sleek kitchen, wood floors and modern bathroom. Ideally located in the heart of St Margarets Village, just moments from the station, with unallocated parking and excellent transport links.

The Grove is just 0.2 miles from St Margarets Station and the vibrant high street with its cafes and boutique shops. The River Thames is also only 1 mile away.

### Features

- Two Double Bedrooms
- Village Location
- Generous Layout
- Wood Floors
- Modern Finishes
- Unallocated Parking

# St. Margarets Road, London, TW1



Total area (approx.): 64.3 sq. m (692.2.1 sq. ft)

## Dexters

St Margarets  
1 Chertsey Road  
St Margarets  
TW1 1LR  
Lettings  
020 8744 9700

Energy Rating: D. We aim to make our particulars both accurate and reliable. However they are not guaranteed; nor do they form part of an offer or contract. If you require clarification on any points then please contact us, especially if you're traveling some distance to view. Please note that appliances and heating systems have not been tested and therefore no warranties can be given as to their good working order.

 **RICS** | Regulated  
Estate Agent  
and Letting Agent

[dexters.co.uk](https://www.dexters.co.uk)