



## Heron Road, TW1

### £800,000

This well presented end of terrace three bedroom Victorian family home comes with a large south-facing garden, no onward chain and potential to convert the loft which would create a wonderful principle suite.

Heron Road is a tree lined residential road in St Margarets 0.3 miles from the River Thames and its tow path walks into Richmond and 0.6 miles from St Margarets village high street. There is also an excellent choice of schools within walking distance.

### Features

- Period Property
- Three Bedrooms
- Potential To Extend
- Fantastic Location
- Downstairs WC
- Secluded Garden





## Heron Road, TW1

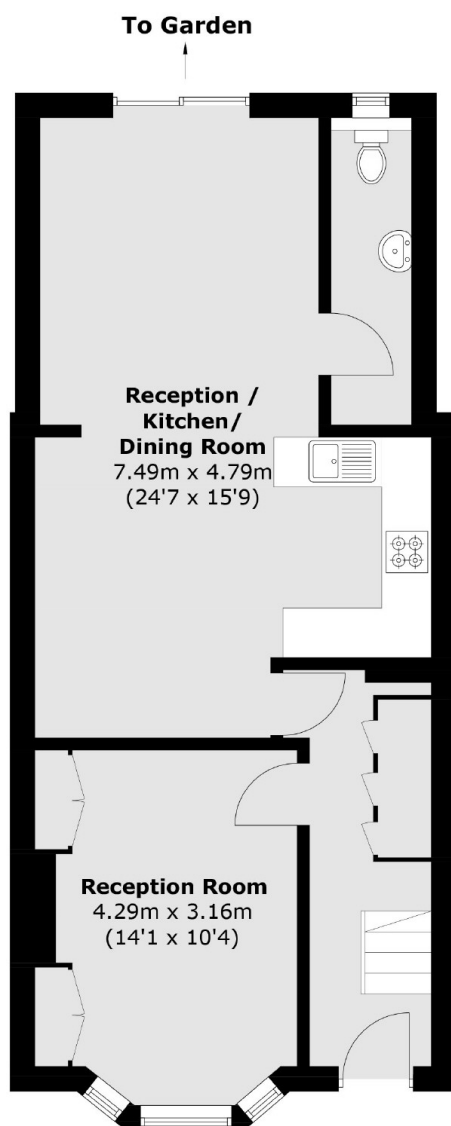
To the front of the house on the ground floor is a charming front reception room with a bay window, feature fireplace and ideal snug. The rear has been extended providing a kitchen/diner and family room, this is sure to become the hub of the home.

On the first floor there are three bedrooms and a spacious family bathroom. This south-facing garden has rear access and backs onto neighbouring gardens which gives a wonderful sense of space and privacy.

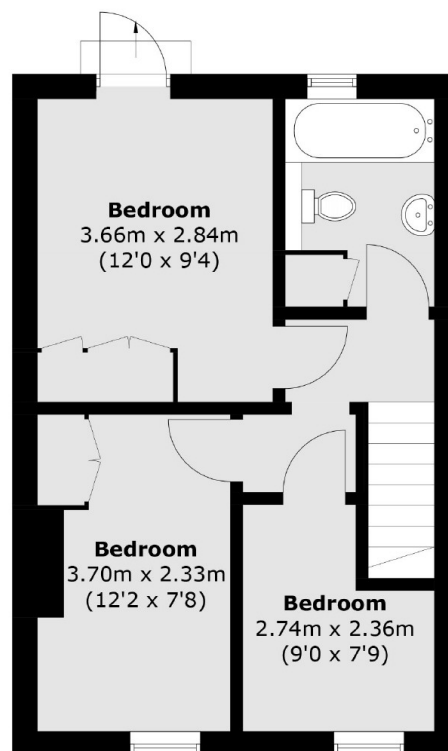




# Heron Road, St Margarets, TW1



**Ground Floor**



**First Floor**

Total area (approx.): 91.5 sq. m (984.9 sq. ft)