



Riverdale Road, TW1

£2,395 Per calendar month

Set within a stunning Victorian villa, this beautifully presented two bedroom maisonette blends period charm with modern living.

Riverdale Road is a tree-lined residential road with a range of majestic looking buildings. It is superbly located moments from the River Thames, with a short river walk to Richmond.

Features

- Two Bedrooms
- Central Location
- Allocated Parking
- Communal Gardens
- Four Piece Bathroom
- Period Features



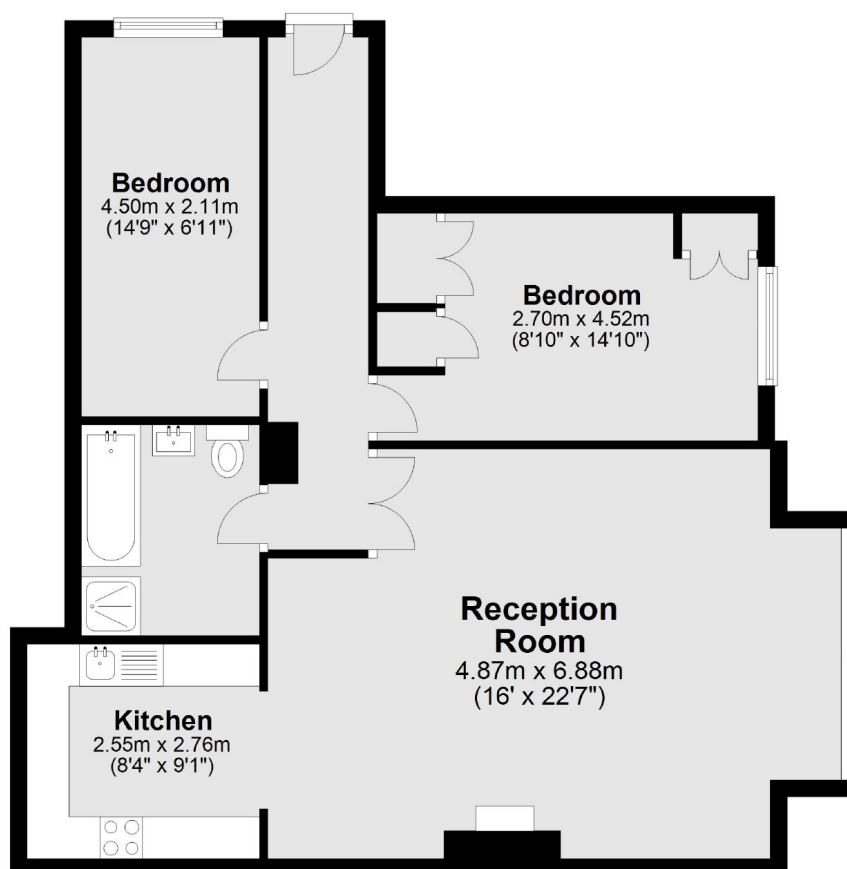
Riverdale Road, TW1

Featuring its own private entrance, original features, a stylish four piece bathroom and a bright living space the property also offers access to communal gardens and allocated parking. Ideally located moments from the high street, this home perfectly balances character and convenience.



Riverdale Road, Twickenham, TW1

Ground Floor



Total area: approx. 73.8 sq. metres (794.5 sq. feet)