



Old House Gardens, TW1

£1,995 Per calendar month

This well presented ground floor apartment offers two generous double bedrooms, wood flooring throughout, a contemporary kitchen and built in wardrobes. The property also benefits from direct access to well maintained communal gardens and unallocated parking. Ideally located close to the River Thames, local amenities and excellent transport links, this home combines comfort and convenience in a sought after location.

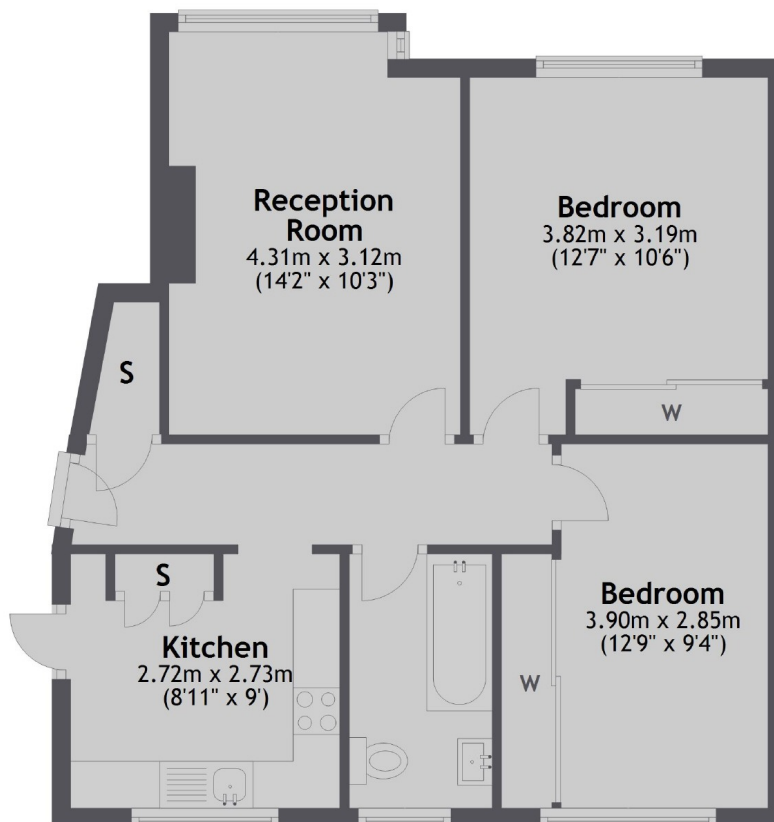
Park Road is a cul-de-sac leading to Ducks Walk in East Twickenham. It gives access to Richmond Bridge and the River Thames. St Margarets village and station are nearby.

Features

- Ground Floor Flat
- Wood Floors Throughout
- Two Double Bedrooms
- Modern Kitchen
- Built In Wardrobes
- Communal Gardens

Old House Gardens, Twickenham, TW1

Ground Floor



Total area: approx. 56.3 sq. metres (606.5 sq. feet)