



The Avenue, TW1

£8,500 Per calendar month

Dexters



The Avenue, TW1

This stunning double-fronted family home is situated in the sought-after St Margarets Trust Grounds, offering exclusive access to approximately 12 acres of picturesque communal parkland. The property blends period features with modern design, including high ceilings, fireplaces and exposed timber floors.

The ground floor offers flexible living with four reception rooms, including a dual-aspect reception and a stylish kitchen/family room. The lower ground floor features a cinema/games room with polished concrete floors. Upstairs, there are six spacious bedrooms and four bathrooms, with the principal bedroom benefiting from an en suite and dressing room.

The rear garden leads to The Pleasure Gardens, and the front driveway provides secure off-street parking for multiple vehicles, plus a garage.

The Avenue is a prestigious tree-lined street in the heart of St Margarets Trust Grounds, within 0.3 miles from the River Thames with tow path walks to Richmond and 1.0 mile from Richmond Train Station, with direct links to London Waterloo and District Line Service.

Features

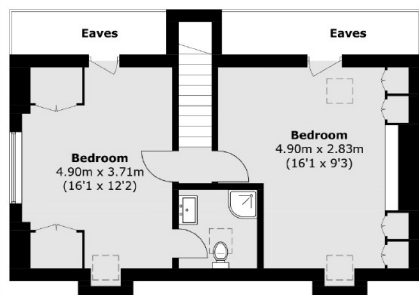
- Six Bedrooms
- Four Reception Rooms
- Access To The Trust Grounds
- Secure Gated Parking
- Landscaped Garden
- Cinema/Games Room



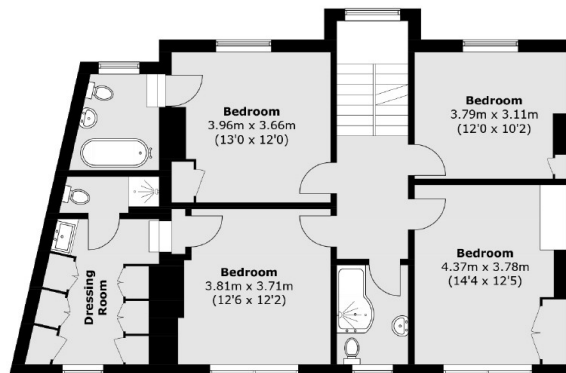




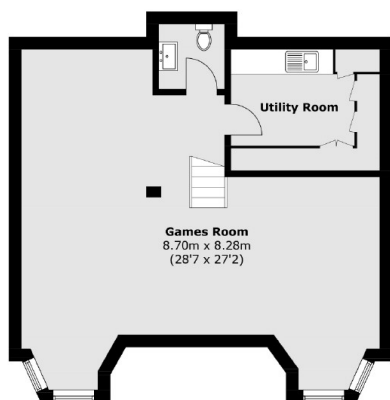
The Avenue, St Margarets, TW1



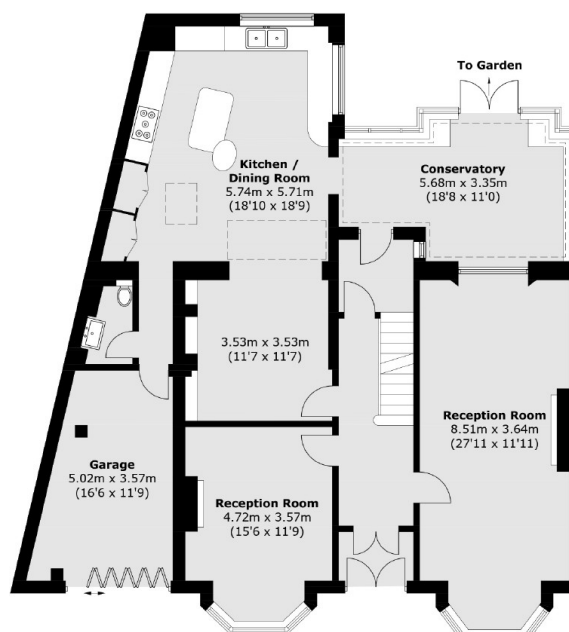
Second Floor



First Floor



Lower Ground Floor



Ground Floor

Total area (approx.): 354.9 sq. m (3,820.1 sq. ft)
(Excluding Eaves & Including Garage)