



Lion Wharf Road, TW7

£499,950

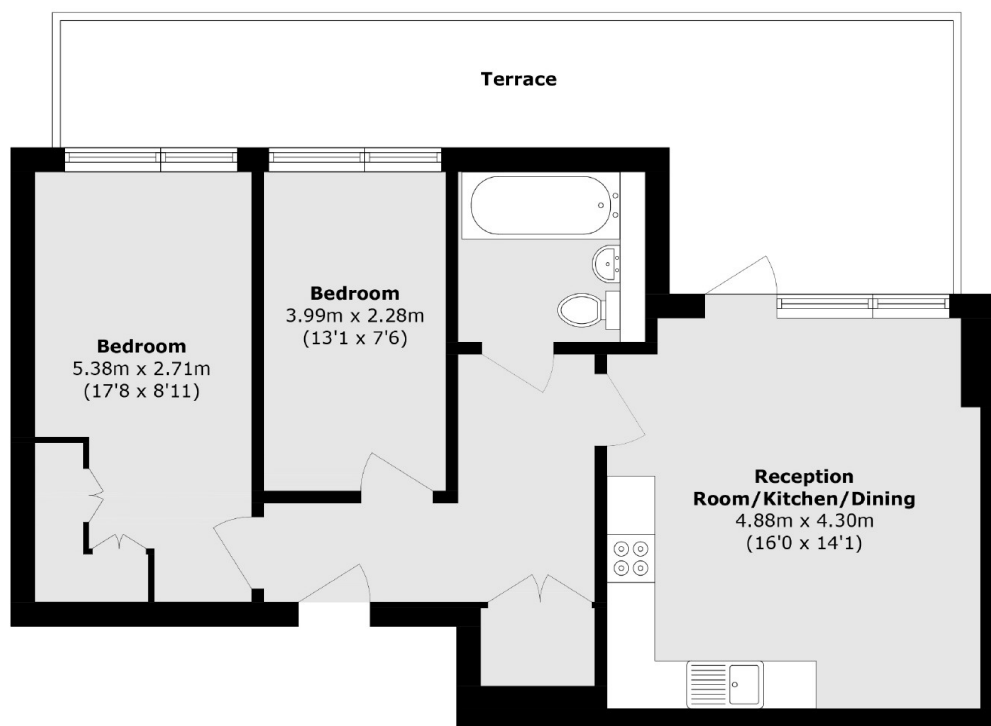
Situated in a popular and prestigious development on the banks of the River Thames, is this two bedroom ground floor apartment finished to a high standard. This fantastic property comes with a large private terrace overlooking the communal gardens as well as secure underground allocated parking. With underfloor heating throughout and a long lease, this property is a must see.

Lion Wharf is a prestigious development on the banks of the River Thames with tow path walks to Richmond and St Margarets village is close by. South Streets popular cafés and restaurants are also close by. There are plenty of bus routes close to hand and Richmond Train Station has a fast overground rail service with its links into London Waterloo and the District Line.

Features

- Ground Floor
- Two Bedrooms
- Allocated Underground Parking
- Long Lease
- Riverside Location
- Private Terrace

Lion Wharf Road, Old Isleworth, TW7



Total area (approx.): 64.2 sq. m (691.0 sq. ft)
Terrace area (approx.): 24.2 sq. m (260.4 sq. ft)