



London Road, TW1

£1,995 Per calendar month

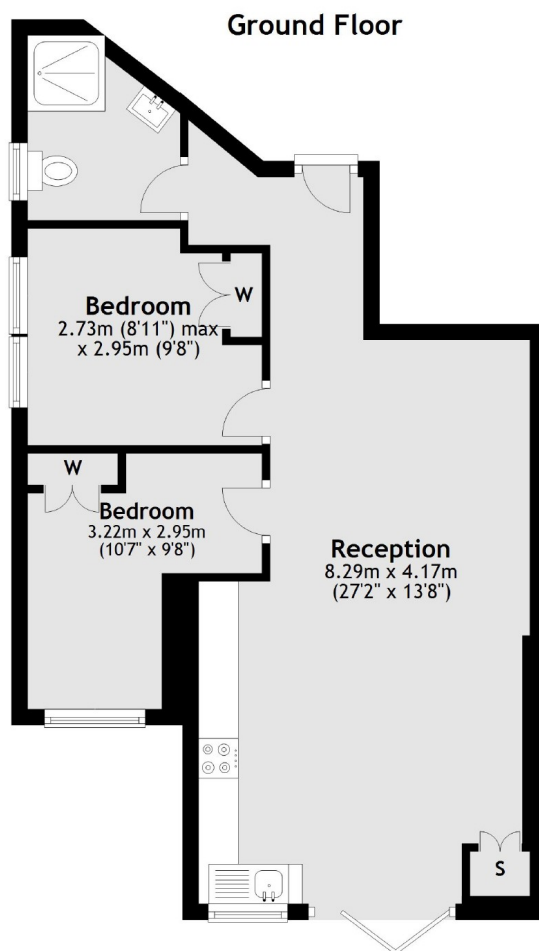
A beautifully presented two bedroom garden flat, perfect for a single professional or couple. Featuring contemporary interiors, wood flooring throughout and a luxurious shower room, this home offers modern comfort and style. The sleek kitchen is equipped with high-end appliances, while the spacious living area opens onto a private garden via bi-folding doors, creating a seamless indoor outdoor space for relaxation or entertaining. Additional benefits include secure residents parking for added convenience.

London Road is just a short distance from St. Margaret's and ideally located for easy access to Twickenham Station, providing swift connections to Central London. The lively town centre is only moments away, offering a fantastic selection of boutiques, cafés, and restaurants, along with scenic riverside walks along the Thames.

Features

- Two Bedrooms
- Open Plan Living
- Modern Kitchen
- Rear Garden
- Wood Floors
- Parking Space

London Road, Twickenham, TW1



Total area: approx. 50.6 sq. metres (544.7 sq. feet)

Dexters

St Margarets
1 Chertsey Road
St Margarets
TW1 1LR
Lettings
020 8744 9700

Energy Rating: C. We aim to make our particulars both accurate and reliable. However they are not guaranteed; nor do they form part of an offer or contract. If you require clarification on any points then please contact us, especially if you're traveling some distance to view. Please note that appliances and heating systems have not been tested and therefore no warranties can be given as to their good working order.

 **RICS** | Regulated
Estate Agent
and Letting Agent

[dexters.co.uk](https://www.dexters.co.uk)