



Elizabeth Gardens, TW7

£850,000

Situated in this popular gated development, is this superb three bedroom townhouse. This well presented family home has spacious and versatile accommodation, perfect for the growing family.

Elizabeth Gardens is a sought after development with access to excellent local schools, the River Thames with its towpath into Richmond. Isleworth leisure centre, library and the historic Old Isleworth with riverside bars and restaurants are close by.

Features

- Modern Townhouse
- Eat-In-Kitchen
- Three Double Bedrooms
- Two Bathrooms
- Off-Street Parking
- Garage



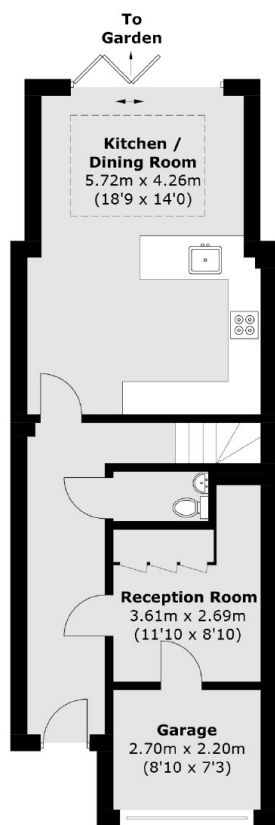
Elizabeth Gardens, TW7

On the ground floor is a beautifully extended kitchen/dining/family room to the rear of the house, with feature lantern and bi-fold doors onto the pretty landscaped garden. The garage has been partially converted creating an additional reception room with utility area, whilst still retaining plenty of storage.

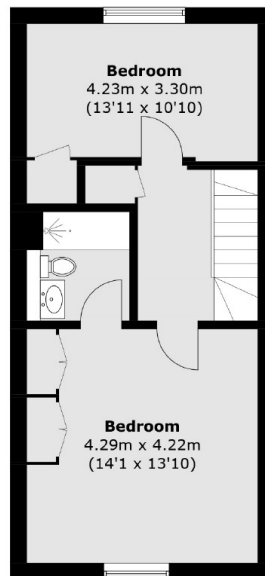
On the first floor you will find a large reception room and double bedroom with family bathroom. Upstairs are two further double bedrooms, with the principal bedroom benefiting from en suite shower room.



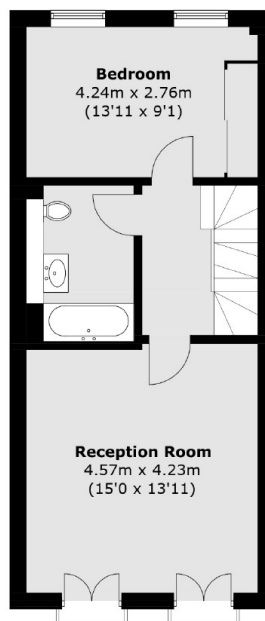
Elizabeth Gardens, Old Isleworth, TW7



Ground Floor



Second Floor



First Floor

Total area (approx.): 138.8 sq. m (1,494.0 sq. ft)
(Including Garage)

Dexters

St Margarets
1 Chertsey Road
St Margarets
TW1 1LR
Sales
020 8744 9400

Energy Rating: C. We aim to make our particulars both accurate and reliable. However they are not guaranteed; nor do they form part of an offer or contract. If you require clarification on any points then please contact us, especially if you're traveling some distance to view. Please note that appliances and heating systems have not been tested and therefore no warranties can be given as to their good working order.

 **RICS** | Regulated
Estate Agent
and Letting Agent

[dexters.co.uk](https://www.dexters.co.uk)