



Tolson Road, TW7

£525,000

A charming two double bedroom Victorian cottage situated in a quiet residential road in Old Isleworth. Beautifully presented throughout and with an easy to maintain courtyard garden, this property is perfect for first time buyers and downsizers.

Tolson Road is a quiet cul-de-sac in the heart of Old Isleworth, 320 ft from the shops on the high street and 0.8 miles from the mainline station with links into London Waterloo.

Features

- Victorian Cottage
- Quiet Cul-De-Sac Location
- Two Double Bedrooms
- Modern Kitchen
- Private Garden
- Beautifully Presented

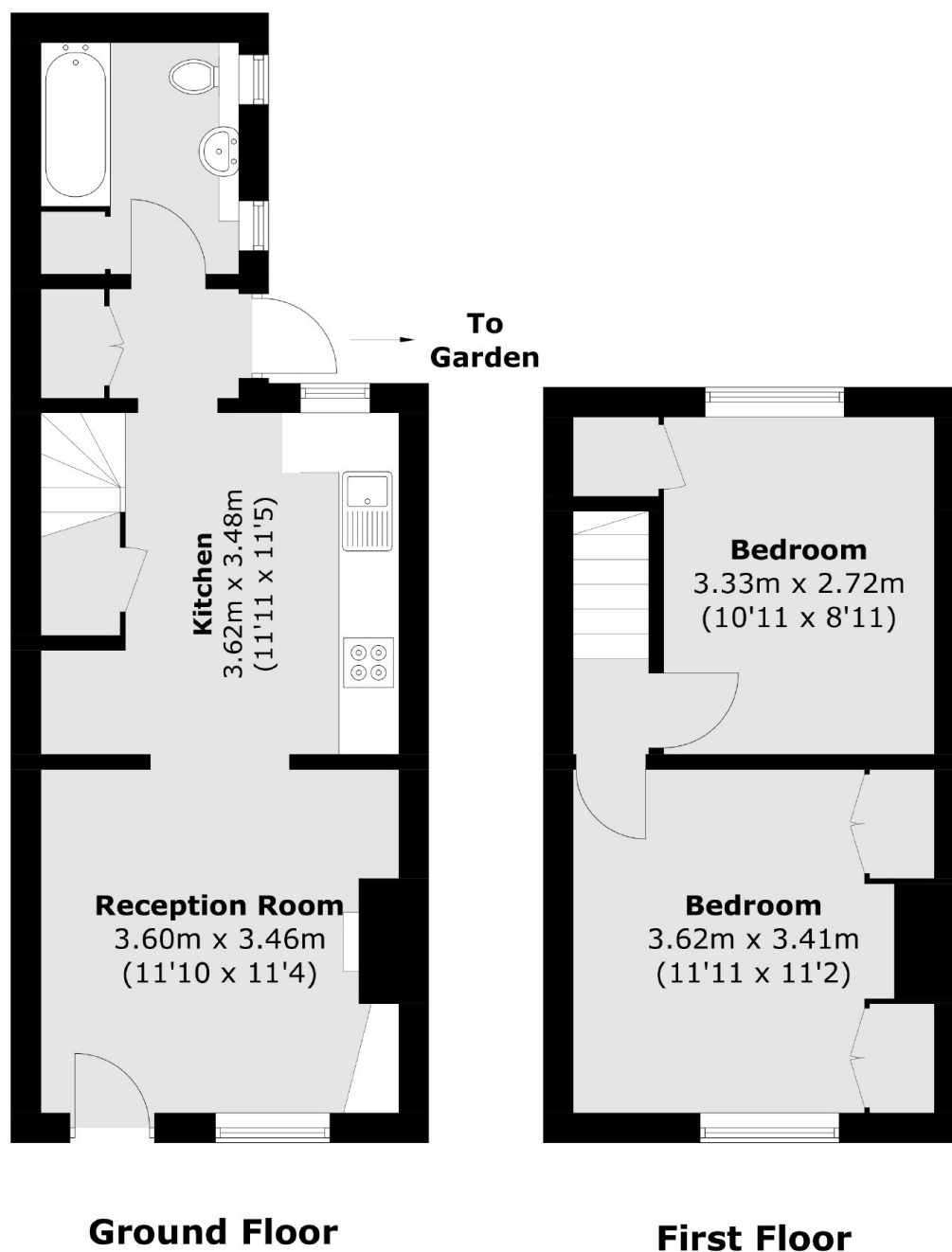


Tolson Road, TW7

Entering this gorgeous home you are greeted by an incredibly bright reception room full of period features, which leads onto a modern kitchen with space for dining and a well-fitted family bathroom. Upstairs there are two well proportioned double bedrooms, one with fitted wardrobes. This property further benefits from plenty of storage, including boarded loft space and offers potential to extend STPP.



Tolson Road, Old Isleworth, TW7



Total area (approx.): 58.4 sq. m (628.6 sq. ft)

Dexters

St Margarets
1 Chertsey Road
St Margarets
TW1 1LR
Sales
020 8744 9400

Energy Rating: D. We aim to make our particulars both accurate and reliable. However they are not guaranteed; nor do they form part of an offer or contract. If you require clarification on any points then please contact us, especially if you're traveling some distance to view. Please note that appliances and heating systems have not been tested and therefore no warranties can be given as to their good working order.

 **RICS** | Regulated
Estate Agent
and Letting Agent

dexters.co.uk